



Datasheet for ABIN7256734  
**anti-Nesprin3 antibody**



[Go to Product page](#)

1 Image

Overview

Quantity:	200 µL
Target:	Nesprin3 (C14orf49)
Reactivity:	Human
Host:	Rabbit
Clonality:	Polyclonal
Conjugate:	This Nesprin3 antibody is un-conjugated
Application:	Western Blotting (WB)

Product Details

Immunogen:	Recombinant fusion protein of human SYNE3 (NP_689805.3).
Isotype:	IgG
Characteristics:	Polyclonal Antibody
Purification:	Affinity purification

Target Details

Target:	Nesprin3 (C14orf49)
Alternative Name:	SYNE3 ( <a href="#">C14orf49 Products</a> )
Background:	SYNE3 (Spectrin Repeat Containing Nuclear Envelope Family Member 3) is a Protein Coding gene. Diseases associated with SYNE3 include Spinocerebellar Ataxia, Autosomal Recessive 8 and Emery-Dreifuss Muscular Dystrophy 3, Autosomal Recessive. Gene Ontology (GO) annotations related to this gene include actin binding and actin filament binding. An important

## Target Details

---

paralog of this gene is SPTBN2.

Molecular Weight: Observed\_MW: 112 kDa  
Calculated\_MW: 68 kDa/111 kDa/112 kDa

Gene ID: 161176

UniProt: [Q6ZMZ3](#)

Pathways: [Maintenance of Protein Location](#)

## Application Details

---

Application Notes: WB 1:500-1:2000

Restrictions: For Research Use only

## Handling

---

Format: Liquid

Concentration: 1 mg/mL

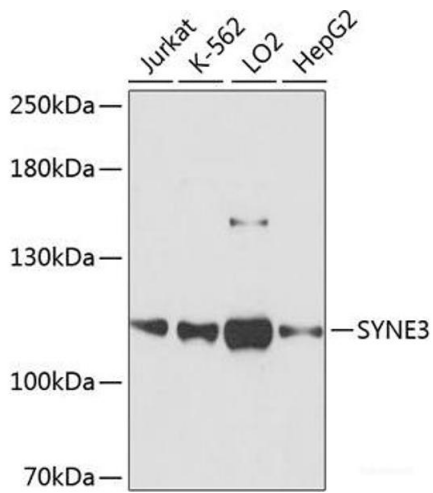
Buffer: PBS with 0.02 % sodium azide, 50 % glycerol, pH 7.3

Preservative: Sodium azide

Precaution of Use: This product contains Sodium azide: a POISONOUS AND HAZARDOUS SUBSTANCE which should be handled by trained staff only.

Storage: -20 °C

Storage Comment: Store at -20°C. Avoid freeze / thaw cycles.



### Western Blotting

**Image 1.** Western blot analysis of extracts of various cell lines using SYNE3 Polyclonal Antibody at dilution of 1:3000.