



[Go to Product page](#)

Datasheet for ABIN7256736
anti-GPIHBP1 antibody

1 Image

Overview

Quantity:	200 µL
Target:	GPIHBP1
Reactivity:	Human
Host:	Rabbit
Clonality:	Polyclonal
Conjugate:	This GPIHBP1 antibody is un-conjugated
Application:	Western Blotting (WB)

Product Details

Immunogen:	Recombinant fusion protein of human GPIHBP1 (NP_835466.2).
Isotype:	IgG
Characteristics:	Polyclonal Antibody
Purification:	Affinity purification

Target Details

Target:	GPIHBP1
Alternative Name:	GPIHBP1 (GPIHBP1 Products)
Background:	This gene encodes a capillary endothelial cell protein that facilitates the lipolytic processing of triglyceride-rich lipoproteins. The encoded protein is a glycosylphosphatidylinositol-anchored protein that is a member of the lymphocyte antigen 6 (Ly6) family. This protein plays a major role in transporting lipoprotein lipase (LPL) from the subendothelial spaces to the capillary

Target Details

lumen. Mutations in this gene are the cause of hyperlipoproteinemia, type 1D. Alternate splicing results in multiple transcript variants.

Molecular Weight: Observed_MW: 20 kDa
Calculated_MW: 19 kDa

Gene ID: 338328

UniProt: [Q8IV16](#)

Application Details

Application Notes: WB 1:500-1:2000

Restrictions: For Research Use only

Handling

Format: Liquid

Concentration: 1 mg/mL

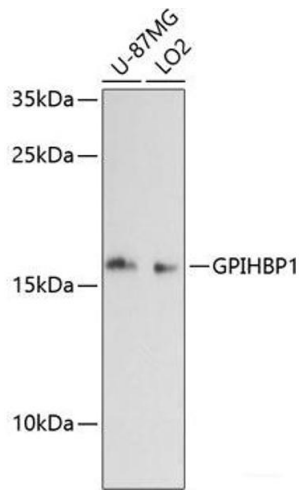
Buffer: PBS with 0.02 % sodium azide, 50 % glycerol, pH 7.3

Preservative: Sodium azide

Precaution of Use: This product contains Sodium azide: a POISONOUS AND HAZARDOUS SUBSTANCE which should be handled by trained staff only.

Storage: -20 °C

Storage Comment: Store at -20°C. Avoid freeze / thaw cycles.



Western Blotting

Image 1. Western blot analysis of extracts of various cell lines using GPIHBP1 Polyclonal Antibody at dilution of 1:3000.