



Datasheet for ABIN7256784

## anti-CHRNA1 antibody



[Go to Product page](#)

### 1 Image

#### Overview

Quantity:	200 µL
Target:	CHRNA1
Reactivity:	Human
Host:	Rabbit
Clonality:	Polyclonal
Conjugate:	This CHRNA1 antibody is un-conjugated
Application:	Immunofluorescence (IF)

#### Product Details

Immunogen:	Recombinant fusion protein of human CHRNA1 (NP_000070.1).
Isotype:	IgG
Characteristics:	Polyclonal Antibody
Purification:	Affinity purification

#### Target Details

Target:	CHRNA1
Alternative Name:	CHRNA1 ( <a href="#">CHRNA1 Products</a> )
Background:	The muscle acetylcholine receptor consists of 5 subunits of 4 different types: 2 alpha subunits and 1 each of the beta, gamma, and delta subunits. This gene encodes an alpha subunit that plays a role in acetylcholine binding/channel gating. Alternatively spliced transcript variants encoding different isoforms have been identified.

## Target Details

Gene ID:	1134
UniProt:	<a href="#">P02708</a>
Pathways:	<a href="#">Skeletal Muscle Fiber Development</a>

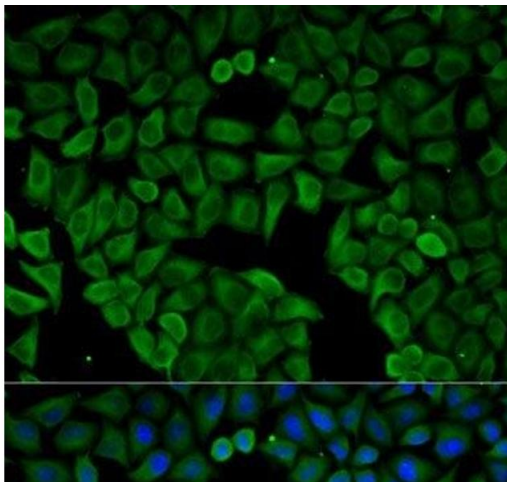
## Application Details

Application Notes:	IF 1:50-1:200
Restrictions:	For Research Use only

## Handling

Format:	Liquid
Concentration:	1 mg/mL
Buffer:	PBS with 0.02 % sodium azide, 50 % glycerol, pH 7.3
Preservative:	Sodium azide
Precaution of Use:	This product contains Sodium azide: a POISONOUS AND HAZARDOUS SUBSTANCE which should be handled by trained staff only.
Storage:	-20 °C
Storage Comment:	Store at -20°C. Avoid freeze / thaw cycles.

## Images



### Immunofluorescence

**Image 1.** Immunofluorescence analysis of HeLa cells using CHRNA1 Polyclonal Antibody