

Datasheet for ABIN7256796

anti-DLD antibody

4 Images

[Go to Product page](#)

Overview

| | |
|--------------|--|
| Quantity: | 200 µL |
| Target: | DLD |
| Reactivity: | Human, Mouse |
| Host: | Rabbit |
| Clonality: | Polyclonal |
| Conjugate: | This DLD antibody is un-conjugated |
| Application: | Western Blotting (WB), Immunohistochemistry (IHC), Immunofluorescence (IF) |

Product Details

| | |
|------------------|--|
| Immunogen: | Recombinant fusion protein of human DLD (NP_000099.2). |
| Isotype: | IgG |
| Characteristics: | Polyclonal Antibody |
| Purification: | Affinity purification |

Target Details

| | |
|-------------------|---|
| Target: | DLD |
| Alternative Name: | DLD (DLD Products) |
| Background: | <p>This gene encodes a member of the class-I pyridine nucleotide-disulfide oxidoreductase family. The encoded protein has been identified as a moonlighting protein based on its ability to perform mechanistically distinct functions. In homodimeric form, the encoded protein functions as a dehydrogenase and is found in several multi-enzyme complexes that regulate energy</p> |

Target Details

metabolism. However, as a monomer, this protein can function as a protease. Mutations in this gene have been identified in patients with E3-deficient maple syrup urine disease and lipoamide dehydrogenase deficiency. Alternative splicing results in multiple transcript variants.

Molecular Weight: Observed_MW: 54 kDa
Calculated_MW: 43 kDa/49 kDa/54 kDa

Gene ID: 1738

UniProt: [P09622](#)

Pathways: [Ribonucleoside Biosynthetic Process](#), [Cell RedoxHomeostasis](#)

Application Details

Application Notes: WB 1:500-1:2000 IHC 1:50-1:200 IF 1:50-1:200

Restrictions: For Research Use only

Handling

Format: Liquid

Concentration: 1 mg/mL

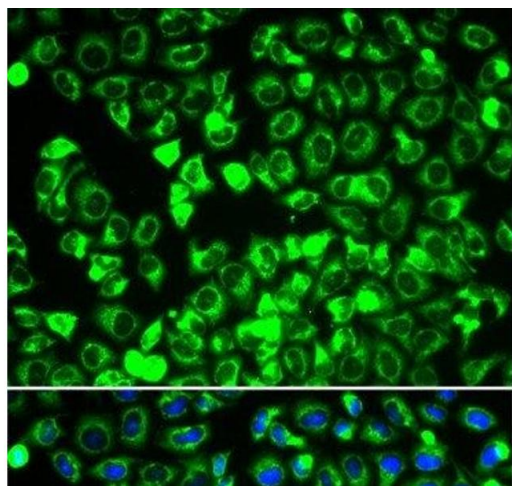
Buffer: PBS with 0.02 % sodium azide, 50 % glycerol, pH 7.3

Preservative: Sodium azide

Precaution of Use: This product contains Sodium azide: a POISONOUS AND HAZARDOUS SUBSTANCE which should be handled by trained staff only.

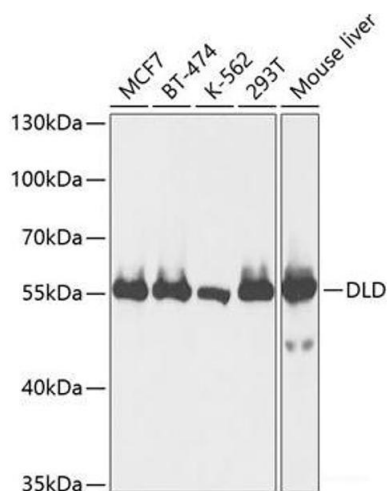
Storage: -20 °C

Storage Comment: Store at -20°C. Avoid freeze / thaw cycles.



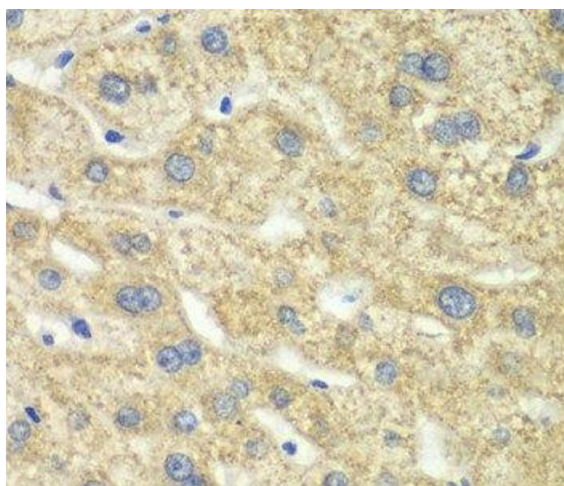
Immunofluorescence

Image 1. Immunofluorescence analysis of HeLa cells using DLD Polyclonal Antibody



Western Blotting

Image 2. Western blot analysis of extracts of various cell lines using DLD Polyclonal Antibody at dilution of 1:1000.



Immunohistochemistry (Paraffin-embedded Sections)

Image 3. Immunohistochemistry of paraffin-embedded Human liver tissue using DLD Polyclonal Antibody at dilution of 1:100 (40x lens).

Please check the [product details page](#) for more images. Overall 4 images are available for ABIN7256796.