

Datasheet for ABIN7256824

**anti-IFRD1 antibody****2** Images[Go to Product page](#)

## Overview

|              |  |
|--------------|--|
| Quantity:    | 200 µL   |
| Target:      | IFRD1  |
| Reactivity:  | Human, Mouse, Rat                              |
| Host:        | Rabbit   |
| Clonality:   | Polyclonal                                     |
| Conjugate:   | This IFRD1 antibody is un-conjugated           |
| Application: | Western Blotting (WB), Immunofluorescence (IF) |

## Product Details

|                  |  |
|------------------|--|
| Immunogen:       | Recombinant fusion protein of human IFRD1 (NP_001541.2). |
| Isotype:         | IgG  |
| Characteristics: | Polyclonal Antibody                                      |
| Purification:    | Affinity purification                                    |

## Target Details

|                   |   |
|-------------------|---|
| Target:           | IFRD1   |
| Alternative Name: | IFRD1 ( <a href="#">IFRD1 Products</a> )  |
| Background:       | <p>This gene is an immediate early gene that encodes a protein related to interferon-gamma. This protein may function as a transcriptional co-activator/repressor that controls the growth and differentiation of specific cell types during embryonic development and tissue regeneration.</p> <p>Mutations in this gene are associated with sensory/motor neuropathy with ataxia. This gene</p> |

## Target Details

may also be involved in modulating the pathogenesis of cystic fibrosis lung disease. Alternate splicing results in multiple transcript variants.

Molecular Weight: Observed\_MW: 47 kDa  
Calculated\_MW: 45 kDa/50 kDa

Gene ID: 3475

UniProt: [O00458](#)

## Application Details

Application Notes: WB 1:500-1:2000 IF 1:50-1:100

Restrictions: For Research Use only

## Handling

Format: Liquid

Concentration: 1 mg/mL

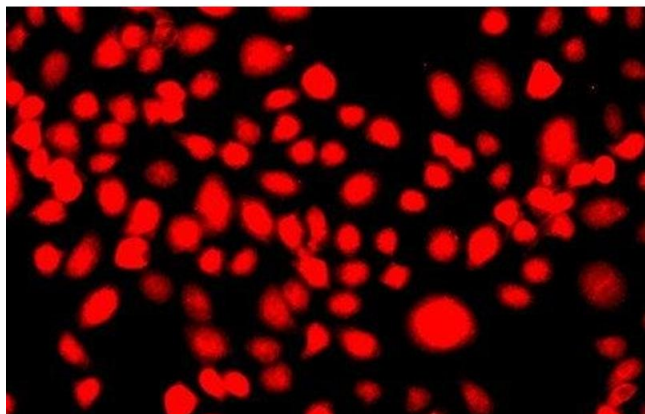
Buffer: PBS with 0.02 % sodium azide, 50 % glycerol, pH 7.3

Preservative: Sodium azide

Precaution of Use: This product contains Sodium azide: a POISONOUS AND HAZARDOUS SUBSTANCE which should be handled by trained staff only.

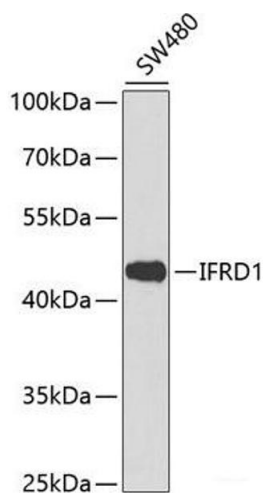
Storage: -20 °C

Storage Comment: Store at -20°C. Avoid freeze / thaw cycles.



#### Immunofluorescence

**Image 1.** Immunofluorescence analysis of A549 cells using IFRD1 Polyclonal Antibody



#### Western Blotting

**Image 2.** Western blot analysis of extracts of SW480 cells using IFRD1 Polyclonal Antibody at dilution of 1:1000.