

Datasheet for ABIN7256840

**anti-MYBPC2 antibody****2** Images[Go to Product page](#)

## Overview

Quantity:	200 µL
Target:	MYBPC2
Reactivity:	Human, Mouse, Rat
Host:	Rabbit
Clonality:	Polyclonal
Conjugate:	This MYBPC2 antibody is un-conjugated
Application:	Western Blotting (WB), Immunohistochemistry (IHC)

## Product Details

Immunogen:	Recombinant fusion protein of human MYBPC2 (NP_004524.3).
Isotype:	IgG
Characteristics:	Polyclonal Antibody
Purification:	Affinity purification

## Target Details

Target:	MYBPC2
Alternative Name:	MYBPC2 ( <a href="#">MYBPC2 Products</a> )
Background:	This gene encodes a member of the myosin-binding protein C family. This family includes the fast-, slow- and cardiac-type isoforms, each of which is a myosin-associated protein found in the cross-bridge-bearing zone (C region) of A bands in striated muscle. The protein encoded by this locus is referred to as the fast-type isoform. Mutations in the related but distinct genes

## Target Details

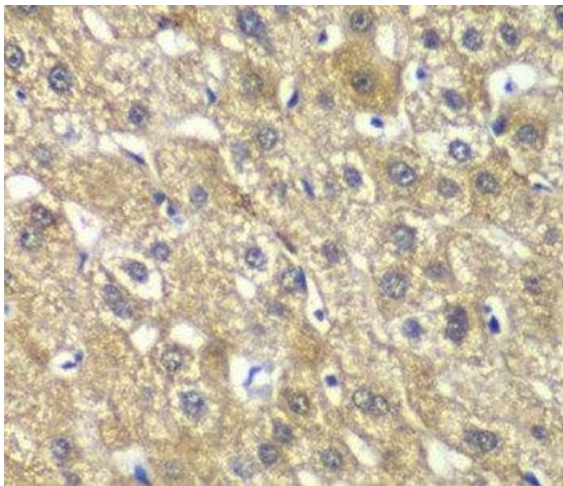
	encoding the slow-type and cardiac-type isoforms have been associated with distal arthrogryposis, type 1 and hypertrophic cardiomyopathy, respectively.
Molecular Weight:	Observed_MW: 140 kDa Calculated_MW: 128 kDa
Gene ID:	4606
UniProt:	<a href="#">Q14324</a>

## Application Details

Application Notes:	WB 1:500-1:2000 IHC 1:50-1:200
Restrictions:	For Research Use only

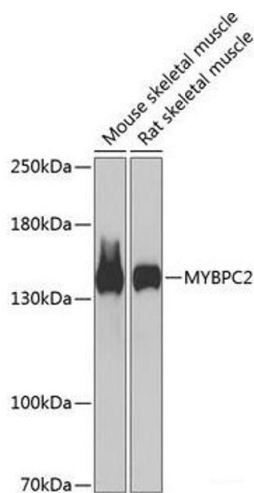
## Handling

Format:	Liquid
Concentration:	1 mg/mL
Buffer:	PBS with 0.02 % sodium azide, 50 % glycerol, pH 7.3
Preservative:	Sodium azide
Precaution of Use:	This product contains Sodium azide: a POISONOUS AND HAZARDOUS SUBSTANCE which should be handled by trained staff only.
Storage:	-20 °C
Storage Comment:	Store at -20°C. Avoid freeze / thaw cycles.



Immunohistochemistry (Paraffin-embedded Sections)

**Image 1.** Immunohistochemistry of paraffin-embedded Human liver damage using MYBPC2 Polyclonal Antibody at dilution of 1:100 (40x lens).



Western Blotting

**Image 2.** Western blot analysis of extracts of various cell lines using MYBPC2 Polyclonal Antibody at dilution of 1:1000.