

Datasheet for ABIN7256932

**anti-COPS5 antibody****3** Images[Go to Product page](#)

## Overview

Quantity:	200 µL
Target:	COPS5
Reactivity:	Human, Mouse, Rat
Host:	Rabbit
Clonality:	Polyclonal
Conjugate:	This COPS5 antibody is un-conjugated
Application:	Immunofluorescence (IF)

## Product Details

Immunogen:	Recombinant fusion protein of human COPS5 (NP_006828.2).
Isotype:	IgG
Characteristics:	Polyclonal Antibody
Purification:	Affinity purification

## Target Details

Target:	COPS5
Alternative Name:	COPS5 ( <a href="#">COPS5 Products</a> )
Background:	The protein encoded by this gene is one of the eight subunits of COP9 signalosome, a highly conserved protein complex that functions as an important regulator in multiple signaling pathways. The structure and function of COP9 signalosome is similar to that of the 19S regulatory particle of 26S proteasome. COP9 signalosome has been shown to interact with

## Target Details

SCF-type E3 ubiquitin ligases and act as a positive regulator of E3 ubiquitin ligases. This protein is reported to be involved in the degradation of cyclin-dependent kinase inhibitor CDKN1B/p27Kip1. It is also known to be an coactivator that increases the specificity of JUN/AP1 transcription factors.

Gene ID: 10987

UniProt: [Q92905](#)

Pathways: [Cell Division Cycle](#)

## Application Details

Application Notes: IF 1:50-1:100

Restrictions: For Research Use only

## Handling

Format: Liquid

Concentration: 1 mg/mL

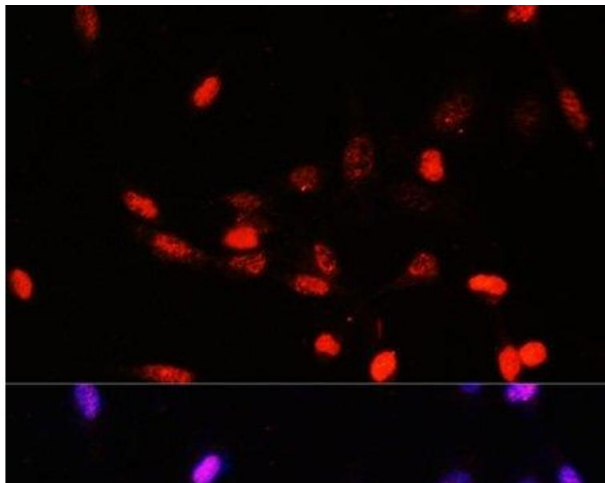
Buffer: PBS with 0.02 % sodium azide, 50 % glycerol, pH 7.3

Preservative: Sodium azide

Precaution of Use: This product contains Sodium azide: a POISONOUS AND HAZARDOUS SUBSTANCE which should be handled by trained staff only.

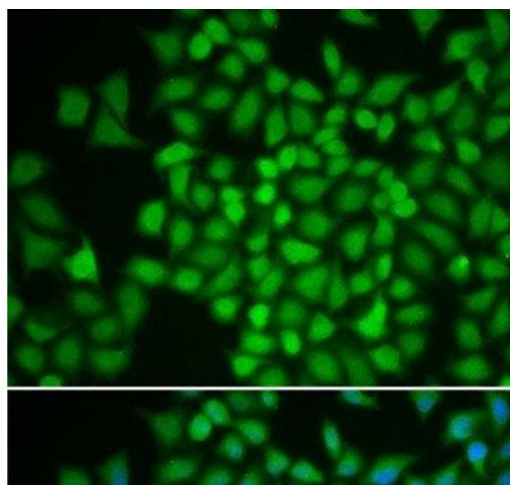
Storage: -20 °C

Storage Comment: Store at -20°C. Avoid freeze / thaw cycles.



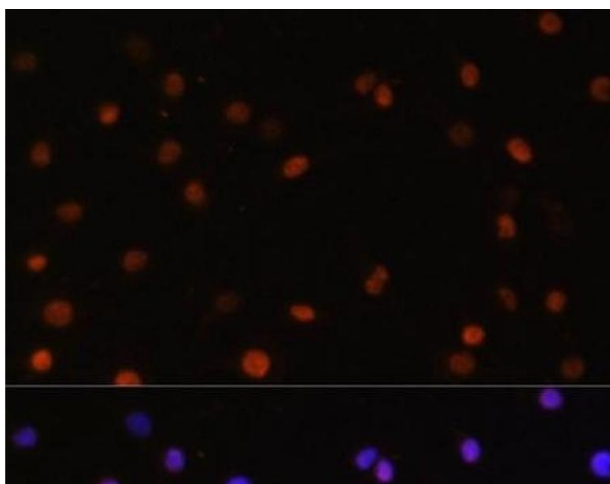
#### Immunofluorescence

**Image 1.** Immunofluorescence analysis of NIH/3T3 cells using COPS5 Polyclonal Antibody at dilution of 1:100. Blue: DAPI for nuclear staining.



#### Immunofluorescence

**Image 2.** Immunofluorescence analysis of HeLa cells using COPS5 Polyclonal Antibody



#### Immunofluorescence

**Image 3.** Immunofluorescence analysis of C6 cells using COPS5 Polyclonal Antibody at dilution of 1:100. Blue: DAPI for nuclear staining.