

Datasheet for ABIN7256950

**anti-LHX6 antibody****1** Image[Go to Product page](#)

## Overview

Quantity:	200 µL
Target:	LHX6
Reactivity:	Human
Host:	Rabbit
Clonality:	Polyclonal
Conjugate:	This LHX6 antibody is un-conjugated
Application:	Immunofluorescence (IF)

## Product Details

Immunogen:	Recombinant fusion protein of human LHX6 (NP_055183.2).
Isotype:	IgG
Characteristics:	Polyclonal Antibody
Purification:	Affinity purification

## Target Details

Target:	LHX6
Alternative Name:	LHX6 ( <a href="#">LHX6 Products</a> )
Background:	This gene encodes a member of a large protein family that contains the LIM domain, a unique cysteine-rich zinc-binding domain. The encoded protein has tandem LIM domains as well as a DNA-binding homeodomain. The protein functions as a transcription factor involved in embryogenesis and head development and is highly expressed in neural crest derived

## Target Details

mesenchyme cells. Alternative splicing results in multiple transcript variants encoding distinct isoforms.

Gene ID: 26468

UniProt: [Q9UPM6](#)

## Application Details

Application Notes: IF 1:50-1:200

Restrictions: For Research Use only

## Handling

Format: Liquid

Concentration: 1 mg/mL

Buffer: PBS with 0.02 % sodium azide, 50 % glycerol, pH 7.3

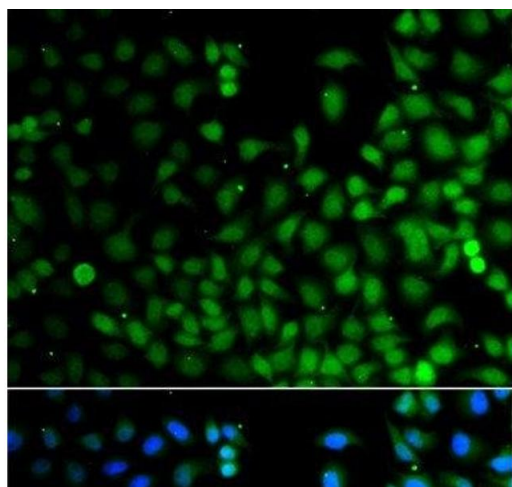
Preservative: Sodium azide

Precaution of Use: This product contains Sodium azide: a POISONOUS AND HAZARDOUS SUBSTANCE which should be handled by trained staff only.

Storage: -20 °C

Storage Comment: Store at -20°C. Avoid freeze / thaw cycles.

## Images



### Immunofluorescence

**Image 1.** Immunofluorescence analysis of A549 cells using LHX6 Polyclonal Antibody