

Datasheet for ABIN7256962  
**anti-NRBF2 antibody**

3 Images



[Go to Product page](#)

### Overview

Quantity:	200 µL
Target:	NRBF2
Reactivity:	Human, Rat
Host:	Rabbit
Clonality:	Polyclonal
Conjugate:	This NRBF2 antibody is un-conjugated
Application:	Western Blotting (WB), Immunohistochemistry (IHC), Immunofluorescence (IF)

### Product Details

Immunogen:	Recombinant fusion protein of human NRBF2 (NP_110386.2).
Isotype:	IgG
Characteristics:	Polyclonal Antibody
Purification:	Affinity purification

### Target Details

Target:	NRBF2
Alternative Name:	NRBF2 ( <a href="#">NRBF2 Products</a> )
Background:	NRBF2 (Nuclear Receptor Binding Factor 2) is a Protein Coding gene. Diseases associated with NRBF2 include Alzheimer Disease. Among its related pathways are Spinocerebellar ataxia and Parkinson disease.

## Target Details

Molecular Weight:	Observed_MW: 38 kDa Calculated_MW: 26 kDa/31 kDa/32 kDa
Gene ID:	29982
UniProt:	<a href="#">Q96F24</a>
Pathways:	<a href="#">Nuclear Receptor Transcription Pathway</a>

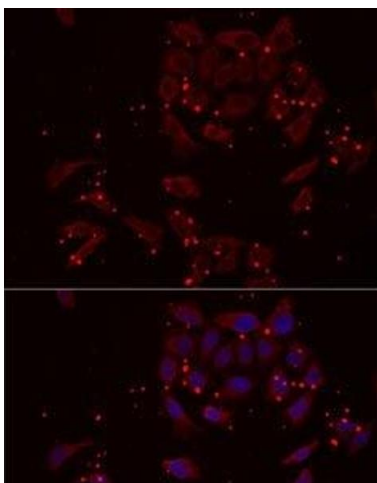
## Application Details

Application Notes:	WB 1:500-1:2000 IHC 1:50-1:200 IF 1:50-1:200
Restrictions:	For Research Use only

## Handling

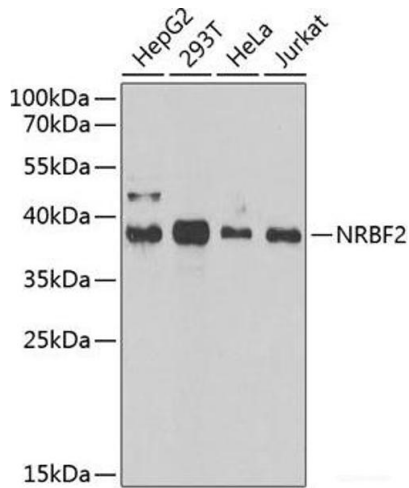
Format:	Liquid
Concentration:	1 mg/mL
Buffer:	PBS with 0.02 % sodium azide, 50 % glycerol, pH 7.3
Preservative:	Sodium azide
Precaution of Use:	This product contains Sodium azide: a POISONOUS AND HAZARDOUS SUBSTANCE which should be handled by trained staff only.
Storage:	-20 °C
Storage Comment:	Store at -20°C. Avoid freeze / thaw cycles.

## Images



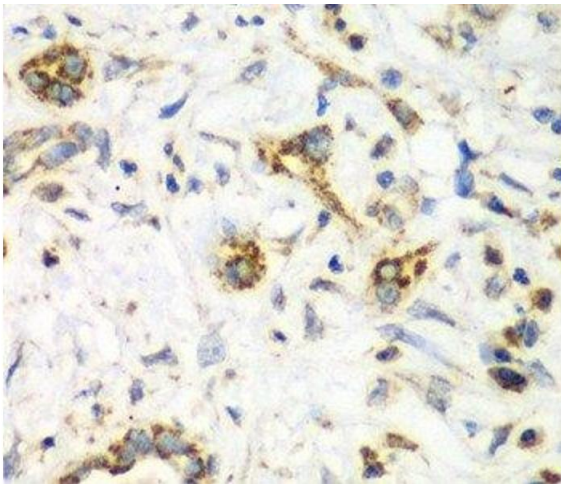
### Immunofluorescence

**Image 1.** Immunofluorescence analysis of MCF7 cells using NRBF2 Polyclonal Antibody



### Western Blotting

**Image 2.** Western blot analysis of extracts of various cell lines using NRBF2 Polyclonal Antibody at dilution of 1:1000.



### Immunohistochemistry (Paraffin-embedded Sections)

**Image 3.** Immunohistochemistry of paraffin-embedded Human liver cancer using NRBF2 Polyclonal Antibody at dilution of 1:100 (40x lens).