



Datasheet for ABIN7256964
anti-CXXC1 antibody



[Go to Product page](#)

2 Images

Overview

Quantity:	200 µL
Target:	CXXC1
Reactivity:	Human, Mouse
Host:	Rabbit
Clonality:	Polyclonal
Conjugate:	This CXXC1 antibody is un-conjugated
Application:	Western Blotting (WB), Immunofluorescence (IF)

Product Details

Immunogen:	Recombinant fusion protein of human CXXC1 (NP_001095124.1).
Isotype:	IgG
Characteristics:	Polyclonal Antibody
Purification:	Affinity purification

Target Details

Target:	CXXC1
Alternative Name:	CXXC1 (CXXC1 Products)
Background:	This gene encodes a protein that functions as a transcriptional activator that binds specifically to non-methylated CpG motifs through its CXXC domain. The protein is a component of the SETD1 complex, regulates gene expression and is essential for vertebrate development.

Target Details

Molecular Weight:	Observed_MW: 80 kDa Calculated_MW: 75 kDa/76 kDa
Gene ID:	30827
UniProt:	Q9P0U4
Pathways:	ER-Nucleus Signaling

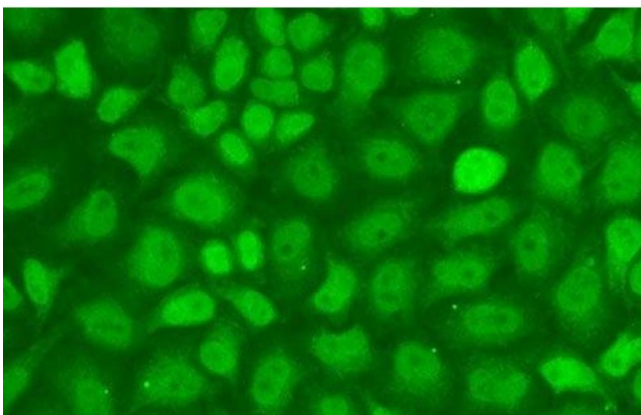
Application Details

Application Notes:	WB 1:500-1:2000 IF 1:50-1:200
Restrictions:	For Research Use only

Handling

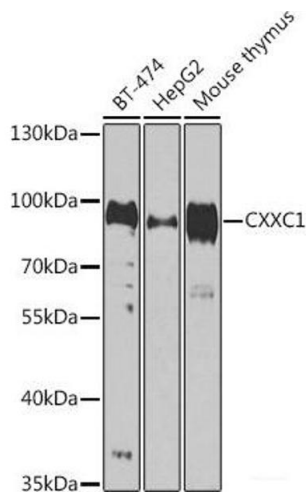
Format:	Liquid
Concentration:	1 mg/mL
Buffer:	PBS with 0.02 % sodium azide, 50 % glycerol, pH 7.3
Preservative:	Sodium azide
Precaution of Use:	This product contains Sodium azide: a POISONOUS AND HAZARDOUS SUBSTANCE which should be handled by trained staff only.
Storage:	-20 °C
Storage Comment:	Store at -20°C. Avoid freeze / thaw cycles.

Images



Immunofluorescence

Image 1. Immunofluorescence analysis of A-549 cells using CXXC1 Polyclonal Antibody



Western Blotting

Image 2. Western blot analysis of extracts of various cell lines using CXXC1 Polyclonal Antibody at dilution of 1:1000.