

Datasheet for ABIN7256988

anti-SETD6 antibody[Go to Product page](#)**1** Image

Overview

Quantity:	200 µL
Target:	SETD6
Reactivity:	Human
Host:	Rabbit
Clonality:	Polyclonal
Conjugate:	This SETD6 antibody is un-conjugated
Application:	Immunofluorescence (IF)

Product Details

Immunogen:	Recombinant fusion protein of human SETD6 (NP_001153777.1).
Isotype:	IgG
Characteristics:	Polyclonal Antibody
Purification:	Affinity purification

Target Details

Target:	SETD6
Alternative Name:	SETD6 (SETD6 Products)
Background:	This gene encodes a methyltransferase that adds a methyl group to the histone H2AZ, which is involved in nuclear receptor-dependent transcription. The protein also interacts with several endogenous proteins which are involved in nuclear hormone receptor signaling. A related pseudogene is located on chromosome 2. Alternative splicing results in multiple transcript

Target Details

	variants.
Gene ID:	79918
UniProt:	Q8TBK2

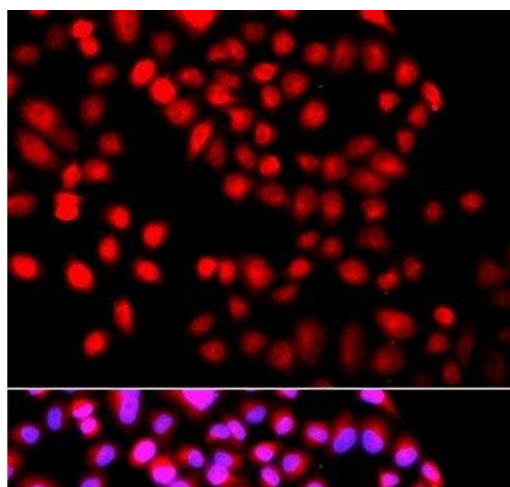
Application Details

Application Notes:	IF 1:50-1:200
Restrictions:	For Research Use only

Handling

Format:	Liquid
Concentration:	1 mg/mL
Buffer:	PBS with 0.02 % sodium azide, 50 % glycerol, pH 7.3
Preservative:	Sodium azide
Precaution of Use:	This product contains Sodium azide: a POISONOUS AND HAZARDOUS SUBSTANCE which should be handled by trained staff only.
Storage:	-20 °C
Storage Comment:	Store at -20°C. Avoid freeze / thaw cycles.

Images



Immunofluorescence

Image 1. Immunofluorescence analysis of A549 cells using SETD6 Polyclonal Antibody