

Datasheet for ABIN7257028

anti-ARHGDIA antibody**2** Images[Go to Product page](#)

Overview

Quantity:	200 µL
Target:	ARHGDIA
Reactivity:	Human, Mouse, Rat
Host:	Rabbit
Clonality:	Polyclonal
Conjugate:	This ARHGDIA antibody is un-conjugated
Application:	Western Blotting (WB), Immunofluorescence (IF)

Product Details

Immunogen:	Recombinant fusion protein of human ARHGDIA (NP_001172006.1).
Isotype:	IgG
Characteristics:	Polyclonal Antibody
Purification:	Affinity purification

Target Details

Target:	ARHGDIA
Alternative Name:	ARHGDIA (ARHGDIA Products)
Background:	This gene encodes a protein that plays a key role in the regulation of signaling through Rho GTPases. The encoded protein inhibits the disassociation of Rho family members from GDP (guanine diphosphate), thereby maintaining these factors in an inactive state. Activity of this protein is important in a variety of cellular processes, and expression of this gene may be

Target Details

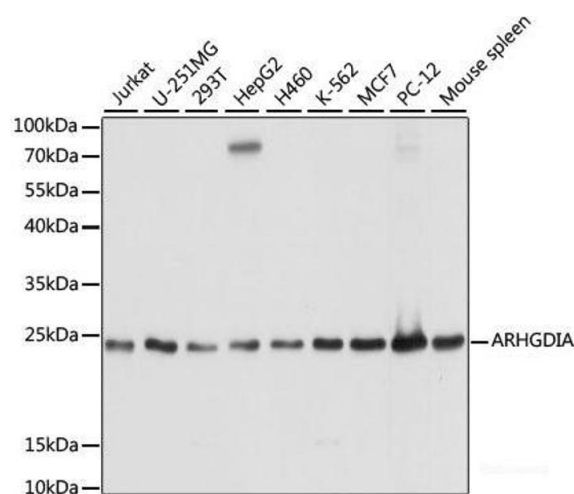
	altered in tumors. Mutations in this gene have been found in individuals with nephrotic syndrome, type 8. Alternate splicing results in multiple transcript variants.
Molecular Weight:	Observed_MW: 23 kDa Calculated_MW: 18 kDa/23 kDa
Gene ID:	396
UniProt:	P52565
Pathways:	Neurotrophin Signaling Pathway

Application Details

Application Notes:	WB 1:500-1:2000 IF 1:50-1:200
Restrictions:	For Research Use only

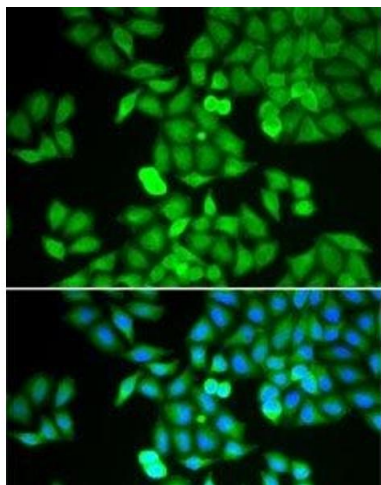
Handling

Format:	Liquid
Concentration:	1 mg/mL
Buffer:	PBS with 0.02 % sodium azide, 50 % glycerol, pH 7.3
Preservative:	Sodium azide
Precaution of Use:	This product contains Sodium azide: a POISONOUS AND HAZARDOUS SUBSTANCE which should be handled by trained staff only.
Storage:	-20 °C
Storage Comment:	Store at -20°C. Avoid freeze / thaw cycles.



Western Blotting

Image 1. Western blot analysis of extracts of various cell lines using ARHGDIA Polyclonal Antibody at dilution of 1:1000.



Immunofluorescence

Image 2. Immunofluorescence analysis of HeLa cells using ARHGDIA Polyclonal Antibody