



Datasheet for ABIN7257030

## anti-ATF3 antibody



[Go to Product page](#)

### 1 Image

#### Overview

Quantity:	200 µL
Target:	ATF3
Reactivity:	Human, Mouse, Rat
Host:	Rabbit
Clonality:	Polyclonal
Conjugate:	This ATF3 antibody is un-conjugated
Application:	Immunofluorescence (IF)

#### Product Details

Immunogen:	Recombinant fusion protein of human ATF3 (NP_001665.1).
Isotype:	IgG
Characteristics:	Polyclonal Antibody
Purification:	Affinity purification

#### Target Details

Target:	ATF3
Alternative Name:	ATF3 ( <a href="#">ATF3 Products</a> )
Background:	This gene encodes a member of the mammalian activation transcription factor/cAMP responsive element-binding (CREB) protein family of transcription factors. This gene is induced by a variety of signals, including many of those encountered by cancer cells, and is involved in the complex process of cellular stress response. Multiple transcript variants encoding different

## Target Details

isoforms have been found for this gene. It is possible that alternative splicing of this gene may be physiologically important in the regulation of target genes.

Gene ID: 467

UniProt: [P18847](#)

Pathways: [Myometrial Relaxation and Contraction](#), [ER-Nucleus Signaling](#), [Unfolded Protein Response](#)

## Application Details

Application Notes: IF 1:50-1:200

Restrictions: For Research Use only

## Handling

Format: Liquid

Concentration: 1 mg/mL

Buffer: PBS with 0.02 % sodium azide, 50 % glycerol, pH 7.3

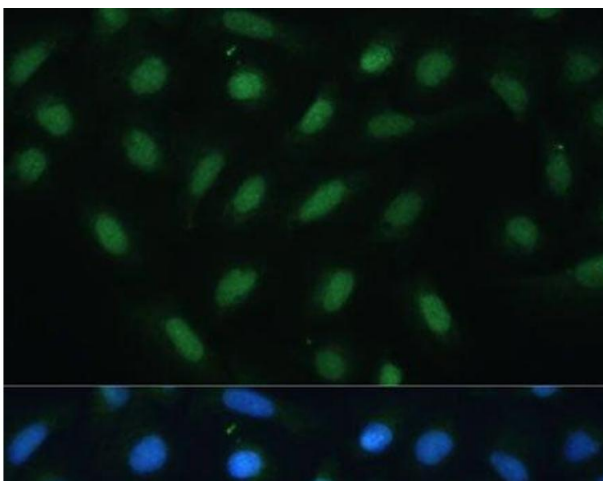
Preservative: Sodium azide

Precaution of Use: This product contains Sodium azide: a POISONOUS AND HAZARDOUS SUBSTANCE which should be handled by trained staff only.

Storage: -20 °C

Storage Comment: Store at -20°C. Avoid freeze / thaw cycles.

## Images



### Immunofluorescence

**Image 1.** Immunofluorescence analysis of U-2 OS cells using ATF3 Polyclonal Antibody at dilution of 1:100. Blue: DAPI for nuclear staining.