

Datasheet for ABIN7257052

anti-CYP51A1 antibody

3 Images

[Go to Product page](#)

Overview

Quantity:	200 µL
Target:	CYP51A1
Reactivity:	Human, Mouse, Rat
Host:	Rabbit
Clonality:	Polyclonal
Conjugate:	This CYP51A1 antibody is un-conjugated
Application:	Western Blotting (WB), Immunofluorescence (IF)

Product Details

Immunogen:	Recombinant fusion protein of human CYP51A1 (NP_000777.1).
Isotype:	IgG
Characteristics:	Polyclonal Antibody
Purification:	Affinity purification

Target Details

Target:	CYP51A1
Alternative Name:	CYP51A1 (CYP51A1 Products)
Background:	This gene encodes a member of the cytochrome P450 superfamily of enzymes. The cytochrome P450 proteins are monooxygenases which catalyze many reactions involved in drug metabolism and synthesis of cholesterol, steroids and other lipids. This endoplasmic reticulum protein participates in the synthesis of cholesterol by catalyzing the removal of the

Target Details

14alpha-methyl group from lanosterol. Homologous genes are found in all three eukaryotic phyla, fungi, plants, and animals, suggesting that this is one of the oldest cytochrome P450 genes. Two transcript variants encoding different isoforms have been found for this gene.

Molecular Weight: Observed_MW: Refer to figures
Calculated_MW: 46 kDa/56 kDa

Gene ID: 1595

UniProt: [Q16850](#)

Application Details

Application Notes: WB 1:500-1:2000 IF 1:50-1:200

Restrictions: For Research Use only

Handling

Format: Liquid

Concentration: 1 mg/mL

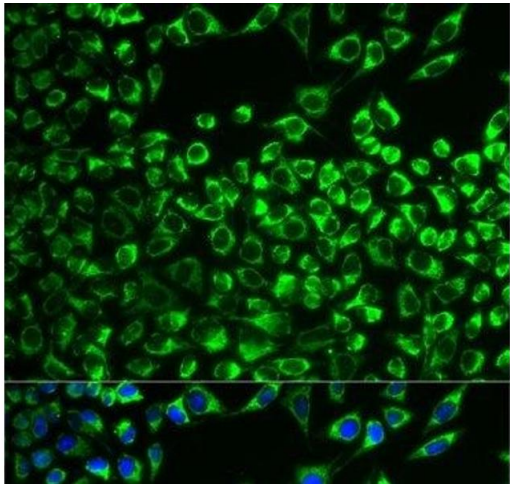
Buffer: PBS with 0.02 % sodium azide, 50 % glycerol, pH 7.3

Preservative: Sodium azide

Precaution of Use: This product contains Sodium azide: a POISONOUS AND HAZARDOUS SUBSTANCE which should be handled by trained staff only.

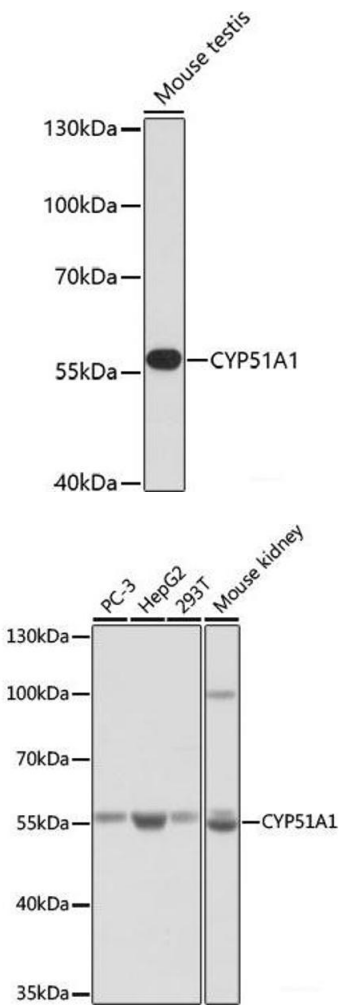
Storage: -20 °C

Storage Comment: Store at -20°C. Avoid freeze / thaw cycles.



Immunofluorescence

Image 1. Immunofluorescence analysis of MCF-7 cells using CYP51A1 Polyclonal Antibody



Western Blotting

Image 2. Western blot analysis of extracts of Mouse testis using CYP51A1 Polyclonal Antibody at dilution of 1:1000.

Western Blotting

Image 3. Western blot analysis of extracts of various cell lines using CYP51A1 Polyclonal Antibody at dilution of 1:1000.