

Datasheet for ABIN7257084

## anti-LCP1 antibody

### 1 Image



[Go to Product page](#)

### Overview

|              |                                     |
|--------------|-------------------------------------|
| Quantity:    | 200 µL                              |
| Target:      | LCP1                                |
| Reactivity:  | Human, Mouse                        |
| Host:        | Rabbit                              |
| Clonality:   | Polyclonal                          |
| Conjugate:   | This LCP1 antibody is un-conjugated |
| Application: | Immunohistochemistry (IHC)          |

### Product Details

|                  |   |
|------------------|---|
| Immunogen:       | Recombinant fusion protein of human LCP1 (NP_002289.2). |
| Isotype:         | IgG   |
| Characteristics: | Polyclonal Antibody                                     |
| Purification:    | Affinity purification                                   |

### Target Details

|                   |  |
|-------------------|--|
| Target:           | LCP1   |
| Alternative Name: | LCP1 ( <a href="#">LCP1 Products</a> )   |
| Background:       | Plastins are a family of actin-binding proteins that are conserved throughout eukaryote evolution and expressed in most tissues of higher eukaryotes. In humans, two ubiquitous plastin isoforms (L and T) have been identified. Plastin 1 (otherwise known as Fimbrin) is a third distinct plastin isoform which is specifically expressed at high levels in the small intestine. The |

## Target Details

---

L isoform is expressed only in hemopoietic cell lineages, while the T isoform has been found in all other normal cells of solid tissues that have replicative potential (fibroblasts, endothelial cells, epithelial cells, melanocytes, etc.). However, L-plastin has been found in many types of malignant human cells of non-hemopoietic origin suggesting that its expression is induced accompanying tumorigenesis in solid tissues.

Gene ID: 3936

UniProt: [P13796](#)

## Application Details

---

Application Notes: IHC 1:50-1:200

Restrictions: For Research Use only

## Handling

---

Format: Liquid

Concentration: 1 mg/mL

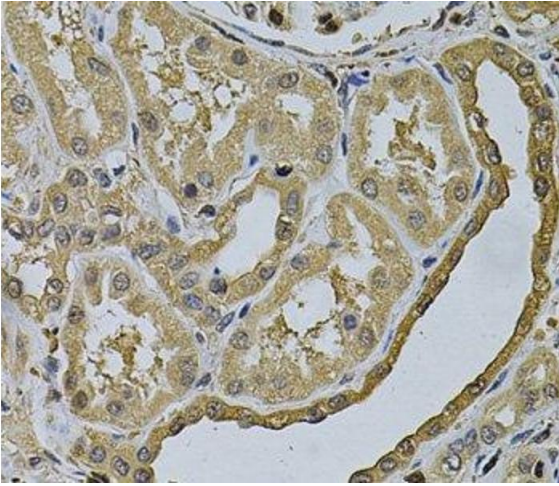
Buffer: PBS with 0.02 % sodium azide, 50 % glycerol, pH 7.3

Preservative: Sodium azide

Precaution of Use: This product contains Sodium azide: a POISONOUS AND HAZARDOUS SUBSTANCE which should be handled by trained staff only.

Storage: -20 °C

Storage Comment: Store at -20°C. Avoid freeze / thaw cycles.



#### Immunohistochemistry (Paraffin-embedded Sections)

**Image 1.** Immunohistochemistry of paraffin-embedded Human kidney using LCP1 Polyclonal Antibody at dilution of 1:100 (40x lens).