

Datasheet for ABIN7257156

anti-TPM3 antibody**2** Images[Go to Product page](#)

Overview

Quantity:	200 µL
Target:	TPM3
Reactivity:	Mouse
Host:	Rabbit
Clonality:	Polyclonal
Conjugate:	This TPM3 antibody is un-conjugated
Application:	Western Blotting (WB), Immunohistochemistry (IHC)

Product Details

Immunogen:	Recombinant fusion protein of human TPM3 (NP_689476.2).
Isotype:	IgG
Characteristics:	Polyclonal Antibody
Purification:	Affinity purification

Target Details

Target:	TPM3
Alternative Name:	TPM3 (TPM3 Products)
Background:	<p>This gene encodes a member of the tropomyosin family of actin-binding proteins. Tropomyosins are dimers of coiled-coil proteins that provide stability to actin filaments and regulate access of other actin-binding proteins. Mutations in this gene result in autosomal dominant nemaline myopathy and other muscle disorders. This locus is involved in</p>

Target Details

translocations with other loci, including anaplastic lymphoma receptor tyrosine kinase (ALK) and neurotrophic tyrosine kinase receptor type 1 (NTRK1), which result in the formation of fusion proteins that act as oncogenes. There are numerous pseudogenes for this gene on different chromosomes. Alternative splicing results in multiple transcript variants.

Molecular Weight: Observed_MW: 37 kDa
Calculated_MW: 18 kDa/28 kDa/29 kDa/32 kDa

Gene ID: 7170

UniProt: [P06753](#)

Application Details

Application Notes: WB 1:500-1:2000 IHC 1:50-1:200

Restrictions: For Research Use only

Handling

Format: Liquid

Concentration: 1 mg/mL

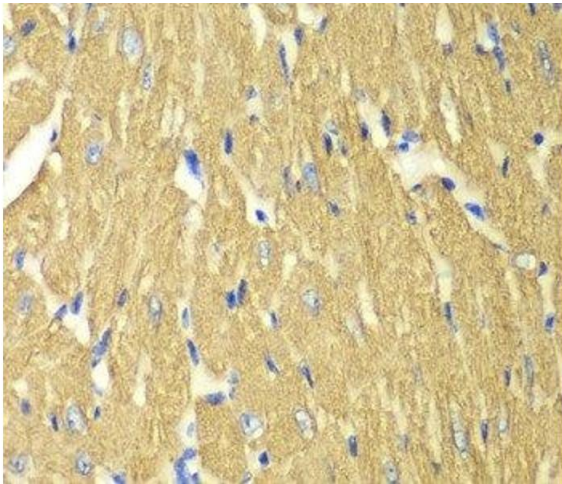
Buffer: PBS with 0.02 % sodium azide, 50 % glycerol, pH 7.3

Preservative: Sodium azide

Precaution of Use: This product contains Sodium azide: a POISONOUS AND HAZARDOUS SUBSTANCE which should be handled by trained staff only.

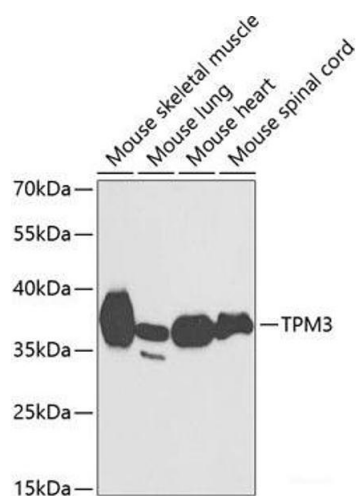
Storage: -20 °C

Storage Comment: Store at -20°C. Avoid freeze / thaw cycles.



Immunohistochemistry (Paraffin-embedded Sections)

Image 1. Immunohistochemistry of paraffin-embedded Mouse heart using TPM3 Polyclonal Antibody at dilution of 1:100 (40x lens).



Western Blotting

Image 2. Western blot analysis of extracts of various cell lines using TPM3 Polyclonal Antibody at dilution of 1:1000.