

Datasheet for ABIN7257210

**anti-KIF2B antibody**[Go to Product page](#)**1** Image

## Overview

Quantity:	200 µL
Target:	KIF2B
Reactivity:	Human
Host:	Rabbit
Clonality:	Polyclonal
Conjugate:	This KIF2B antibody is un-conjugated
Application:	Immunofluorescence (IF)

## Product Details

Immunogen:	Recombinant fusion protein of human KIF2B (NP_115948.4).
Isotype:	IgG
Characteristics:	Polyclonal Antibody
Purification:	Affinity purification

## Target Details

Target:	KIF2B
Alternative Name:	KIF2B ( <a href="#">KIF2B Products</a> )
Background:	KIF2B (Kinesin Family Member 2B) is a Protein Coding gene. Diseases associated with KIF2B include Charcot-Marie-Tooth Disease, Type 4C and Hereditary Neuropathies. Among its related pathways are Signaling by GPCR and Mitotic Prometaphase. Gene Ontology (GO) annotations related to this gene include ATPase activity and microtubule motor activity. An important

## Target Details

paralog of this gene is KIF2A.

Gene ID: 84643

UniProt: [Q8N4N8](#)

Pathways: [Microtubule Dynamics](#)

## Application Details

Application Notes: IF 1:50-1:200

Restrictions: For Research Use only

## Handling

Format: Liquid

Concentration: 1 mg/mL

Buffer: PBS with 0.02 % sodium azide, 50 % glycerol, pH 7.3

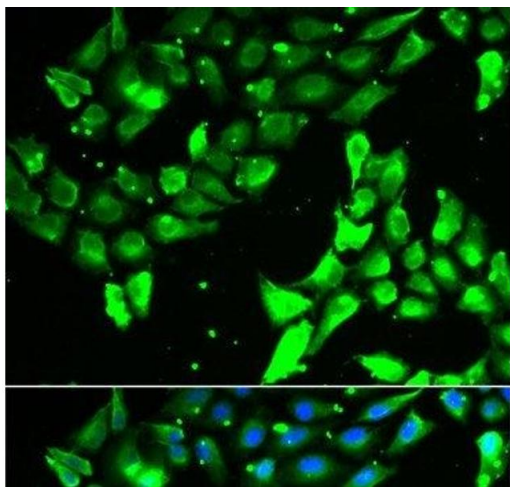
Preservative: Sodium azide

Precaution of Use: This product contains Sodium azide: a POISONOUS AND HAZARDOUS SUBSTANCE which should be handled by trained staff only.

Storage: -20 °C

Storage Comment: Store at -20°C. Avoid freeze / thaw cycles.

## Images



### Immunofluorescence

**Image 1.** Immunofluorescence analysis of A549 cells using KIF2B Polyclonal Antibody