

Datasheet for ABIN7257238  
**anti-PKC beta antibody**



[Go to Product page](#)

5 Images

## Overview

Quantity:	200 µL
Target:	PKC beta (PRKCB)
Reactivity:	Human, Rat, Mouse
Host:	Rabbit
Clonality:	Polyclonal
Conjugate:	This PKC beta antibody is un-conjugated
Application:	Immunohistochemistry (IHC), Immunofluorescence (IF)

## Product Details

Immunogen:	Recombinant fusion protein of human PRKCB (NP_002729.2).
Isotype:	IgG
Characteristics:	Polyclonal Antibody
Purification:	Affinity purification

## Target Details

Target:	PKC beta (PRKCB)
Alternative Name:	PRKCB ( <a href="#">PRKCB Products</a> )
Background:	Protein kinase C (PKC) is a family of serine- and threonine-specific protein kinases that can be activated by calcium and second messenger diacylglycerol. PKC family members phosphorylate a wide variety of protein targets and are known to be involved in diverse cellular signaling pathways. PKC family members also serve as major receptors for phorbol esters, a

## Target Details

class of tumor promoters. Each member of the PKC family has a specific expression profile and is believed to play a distinct role in cells. The protein encoded by this gene is one of the PKC family members. This protein kinase has been reported to be involved in many different cellular functions, such as B cell activation, apoptosis induction, endothelial cell proliferation, and intestinal sugar absorption. Studies in mice also suggest that this kinase may also regulate neuronal functions and correlate fear-induced conflict behavior after stress. Alternatively spliced transcript variants encoding distinct isoforms have been reported.

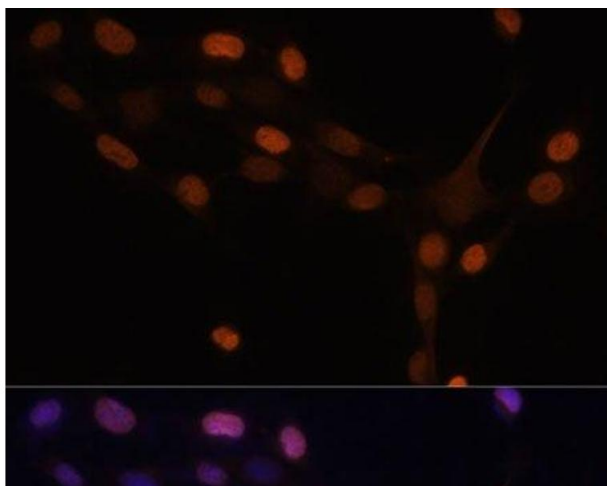
Gene ID:	5579
UniProt:	<a href="#">P05771</a>
Pathways:	<a href="#">WNT Signaling</a> , <a href="#">TCR Signaling</a> , <a href="#">Thyroid Hormone Synthesis</a> , <a href="#">Nuclear Hormone Receptor Binding</a> , <a href="#">Chromatin Binding</a> , <a href="#">Myometrial Relaxation and Contraction</a> , <a href="#">VEGF Signaling</a> , <a href="#">Unfolded Protein Response</a> , <a href="#">BCR Signaling</a>

## Application Details

Application Notes:	IHC 1:50-1:100 IF 1:50-1:100
Restrictions:	For Research Use only

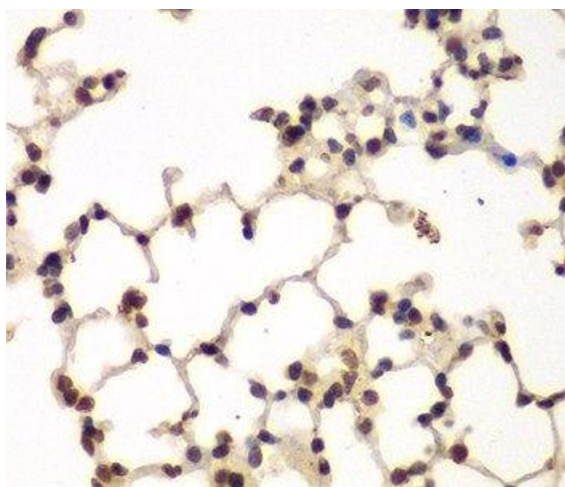
## Handling

Format:	Liquid
Concentration:	1 mg/mL
Buffer:	PBS with 0.02 % sodium azide, 50 % glycerol, pH 7.3
Preservative:	Sodium azide
Precaution of Use:	This product contains Sodium azide: a POISONOUS AND HAZARDOUS SUBSTANCE which should be handled by trained staff only.
Storage:	-20 °C
Storage Comment:	Store at -20°C. Avoid freeze / thaw cycles.



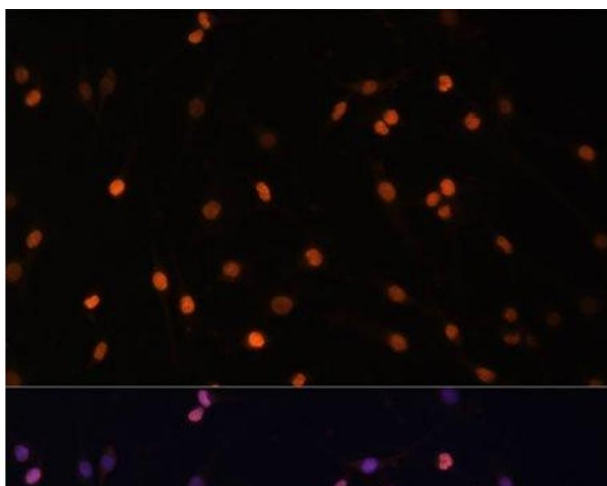
#### Immunofluorescence

**Image 1.** Immunofluorescence analysis of NIH-3T3 cells using PRKCB Polyclonal Antibody at dilution of 1:100 (40x lens). Blue: DAPI for nuclear staining.



#### Immunohistochemistry (Paraffin-embedded Sections)

**Image 2.** Immunohistochemistry of paraffin-embedded Mouse lung using PRKCB Polyclonal Antibody at dilution of 1:200 (40x lens).



#### Immunofluorescence

**Image 3.** Immunofluorescence analysis of C6 cells using PRKCB Polyclonal Antibody at dilution of 1:100 (40x lens). Blue: DAPI for nuclear staining.

Please check the [product details page](#) for more images. Overall 5 images are available for ABIN7257238.