



[Go to Product page](#)

Datasheet for ABIN7257268
anti-SLC2A5 antibody

1 Image

Overview

Quantity:	200 µL
Target:	SLC2A5
Reactivity:	Human, Mouse
Host:	Rabbit
Clonality:	Polyclonal
Conjugate:	This SLC2A5 antibody is un-conjugated
Application:	Western Blotting (WB)

Product Details

Immunogen:	A synthetic peptide of human SLC2A5 (NP_003030.1).
Isotype:	IgG
Characteristics:	Polyclonal Antibody
Purification:	Affinity purification

Target Details

Target:	SLC2A5
Alternative Name:	SLC2A5 (SLC2A5 Products)
Background:	The protein encoded by this gene is a fructose transporter responsible for fructose uptake by the small intestine. The encoded protein also is necessary for the increase in blood pressure due to high dietary fructose consumption.

Target Details

Molecular Weight: Observed_MW: 65 kDa
Calculated_MW: 26 kDa/54 kDa

Gene ID: 6518

UniProt: [P22732](#)

Application Details

Application Notes: WB 1:200-1:2000

Restrictions: For Research Use only

Handling

Format: Liquid

Concentration: 1 mg/mL

Buffer: PBS with 0.02 % sodium azide, 50 % glycerol, pH 7.3

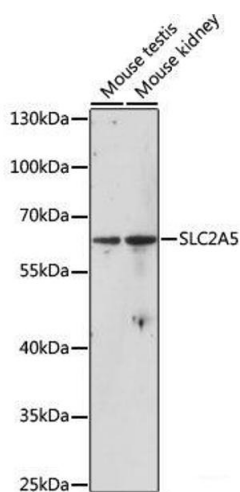
Preservative: Sodium azide

Precaution of Use: This product contains Sodium azide: a POISONOUS AND HAZARDOUS SUBSTANCE which should be handled by trained staff only.

Storage: -20 °C

Storage Comment: Store at -20°C. Avoid freeze / thaw cycles.

Images



Western Blotting

Image 1. Western blot analysis of extracts of various cell lines using SLC2A5 Polyclonal Antibody at dilution of 1:1000.