

Datasheet for ABIN7257291

anti-C1S antibody[Go to Product page](#)**1** Image

Overview

Quantity:	200 µL
Target:	C1S
Reactivity:	Human, Mouse
Host:	Rabbit
Clonality:	Polyclonal
Conjugate:	This C1S antibody is un-conjugated
Application:	Immunofluorescence (IF)

Product Details

Immunogen:	Recombinant fusion protein of human C1S (NP_958850.1).
Isotype:	IgG
Characteristics:	Polyclonal Antibody
Purification:	Affinity purification

Target Details

Target:	C1S
Alternative Name:	C1S (C1S Products)
Background:	This gene encodes a serine protease, which is a major constituent of the human complement subcomponent C1. C1s associates with two other complement components C1r and C1q in order to yield the first component of the serum complement system. Defects in this gene are the cause of selective C1s deficiency.

Target Details

Gene ID:	716
UniProt:	P09871
Pathways:	Complement System

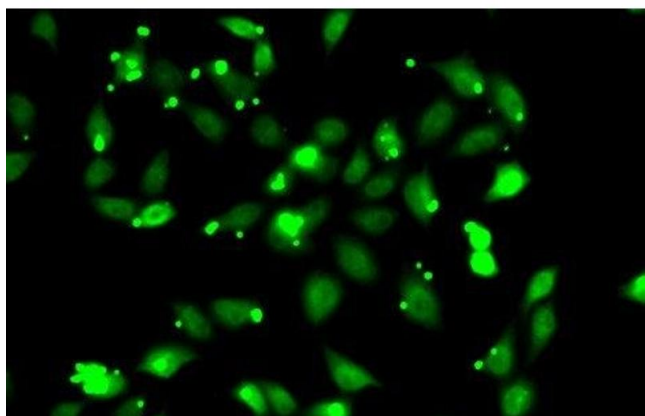
Application Details

Application Notes:	IF 1:50-1:200
Restrictions:	For Research Use only

Handling

Format:	Liquid
Concentration:	1 mg/mL
Buffer:	PBS with 0.02 % sodium azide, 50 % glycerol, pH 7.3
Preservative:	Sodium azide
Precaution of Use:	This product contains Sodium azide: a POISONOUS AND HAZARDOUS SUBSTANCE which should be handled by trained staff only.
Storage:	-20 °C
Storage Comment:	Store at -20°C. Avoid freeze / thaw cycles.

Images



Immunofluorescence

Image 1. Immunofluorescence analysis of HeLa cells using C1S Polyclonal Antibody