

## Datasheet for ABIN7257301 **anti-Calpastatin antibody**



[Go to Product page](#)

### 1 Image

#### Overview

Quantity:	200 µL
Target:	Calpastatin (CAST)
Reactivity:	Human, Mouse, Rat
Host:	Rabbit
Clonality:	Polyclonal
Conjugate:	This Calpastatin antibody is un-conjugated
Application:	Immunofluorescence (IF)

#### Product Details

Immunogen:	A synthetic peptide of human CAST (NP_001177371.1).
Isotype:	IgG
Characteristics:	Polyclonal Antibody
Purification:	Affinity purification

#### Target Details

Target:	Calpastatin (CAST)
Alternative Name:	CAST ( <a href="#">CAST Products</a> )
Background:	The protein encoded by this gene is an endogenous calpain (calcium-dependent cysteine protease) inhibitor. It consists of an N-terminal domain L and four repetitive calpain-inhibition domains (domains 1-4), and it is involved in the proteolysis of amyloid precursor protein. The calpain/calpastatin system is involved in numerous membrane fusion events, such as neural

## Target Details

vesicle exocytosis and platelet and red-cell aggregation. The encoded protein is also thought to affect the expression levels of genes encoding structural or regulatory proteins. Alternatively spliced transcript variants encoding different isoforms have been described.

Gene ID: 831

UniProt: [P20810](#)

## Application Details

Application Notes: IF 1:50-1:200

Restrictions: For Research Use only

## Handling

Format: Liquid

Concentration: 1 mg/mL

Buffer: PBS with 0.02 % sodium azide, 50 % glycerol, pH 7.3

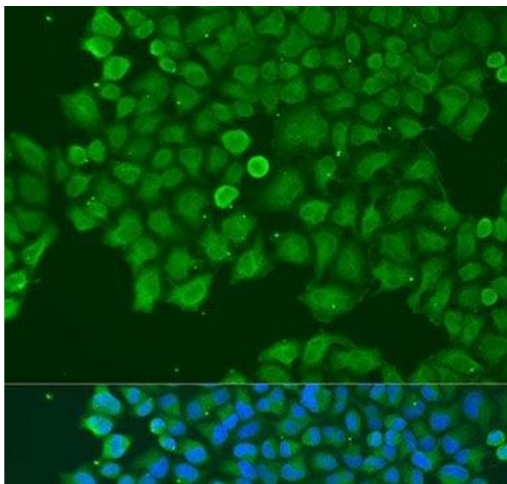
Preservative: Sodium azide

Precaution of Use: This product contains Sodium azide: a POISONOUS AND HAZARDOUS SUBSTANCE which should be handled by trained staff only.

Storage: -20 °C

Storage Comment: Store at -20°C. Avoid freeze / thaw cycles.

## Images



### Immunofluorescence

**Image 1.** Immunofluorescence analysis of U2OS cells using CAST Polyclonal Antibody at dilution of 1:100. Blue: DAPI for nuclear staining.