



Datasheet for ABIN7257325 anti-GEMIN8 antibody



[Go to Product page](#)

1 Image

Overview

Quantity:	200 µL
Target:	GEMIN8
Reactivity:	Human
Host:	Rabbit
Clonality:	Polyclonal
Conjugate:	This GEMIN8 antibody is un-conjugated
Application:	Western Blotting (WB)

Product Details

Immunogen:	Recombinant fusion protein of human GEMIN8 (NP_060326.1).
Isotype:	IgG
Characteristics:	Polyclonal Antibody
Purification:	Affinity purification

Target Details

Target:	GEMIN8
Alternative Name:	GEMIN8 (GEMIN8 Products)
Background:	The protein encoded by this gene is part of the SMN complex, which is necessary for spliceosomal snRNP assembly in the cytoplasm and pre-mRNA splicing in the nucleus. The encoded protein binds to both SMN1 and the GEMIN6/GEMIN7 heterodimer, mediating their interaction. This protein is found in nuclear Gemini of Cajal bodies (gems) and in the cytoplasm.

Target Details

Three transcript variants encoding the same protein have been found for this gene.

Molecular Weight: Observed_MW: 35 kDa
Calculated_MW: 28 kDa

Gene ID: 54960

UniProt: [Q9NWZ8](#)

Pathways: [Ribonucleoprotein Complex Subunit Organization](#)

Application Details

Application Notes: WB 1:500-1:2000

Restrictions: For Research Use only

Handling

Format: Liquid

Concentration: 1 mg/mL

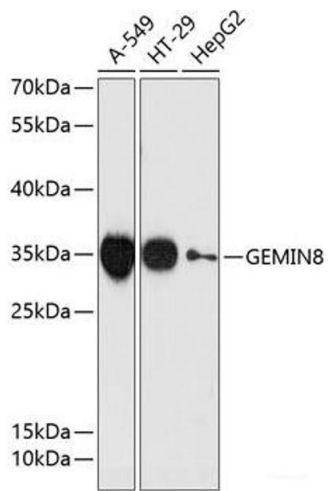
Buffer: PBS with 0.02 % sodium azide, 50 % glycerol, pH 7.3

Preservative: Sodium azide

Precaution of Use: This product contains Sodium azide: a POISONOUS AND HAZARDOUS SUBSTANCE which should be handled by trained staff only.

Storage: -20 °C

Storage Comment: Store at -20°C. Avoid freeze / thaw cycles.



Western Blotting

Image 1. Western blot analysis of extracts of various cell lines using GEMIN8 Polyclonal Antibody at dilution of 1:3000.