

Datasheet for ABIN7257327

**anti-MDFI antibody**[Go to Product page](#)**1** Image

## Overview

Quantity:	200 µL
Target:	MDFI
Reactivity:	Rat, Mouse
Host:	Rabbit
Clonality:	Polyclonal
Conjugate:	This MDFI antibody is un-conjugated
Application:	Western Blotting (WB)

## Product Details

Immunogen:	Recombinant fusion protein of human MDFI (NP_005577.1).
Isotype:	IgG
Characteristics:	Polyclonal Antibody
Purification:	Affinity purification

## Target Details

Target:	MDFI
Alternative Name:	MDFI ( <a href="#">MDFI Products</a> )
Background:	This protein is a transcription factor that negatively regulates other myogenic family proteins. Studies of the mouse homolog, I-mf, show that it interferes with myogenic factor function by masking nuclear localization signals and preventing DNA binding. Knockout mouse studies show defects in the formation of vertebrae and ribs that also involve cartilage formation in

## Target Details

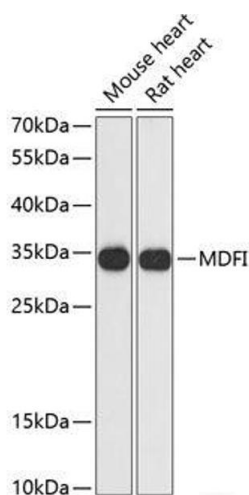
	these structures.
Molecular Weight:	Observed_MW: 35 kDa Calculated_MW: 25 kDa
Gene ID:	4188
UniProt:	<a href="#">Q99750</a>
Pathways:	<a href="#">Maintenance of Protein Location</a>

## Application Details

Application Notes:	WB 1:500-1:2000
Restrictions:	For Research Use only

## Handling

Format:	Liquid
Concentration:	1 mg/mL
Buffer:	PBS with 0.02 % sodium azide, 50 % glycerol, pH 7.3
Preservative:	Sodium azide
Precaution of Use:	This product contains Sodium azide: a POISONOUS AND HAZARDOUS SUBSTANCE which should be handled by trained staff only.
Storage:	-20 °C
Storage Comment:	Store at -20°C. Avoid freeze / thaw cycles.



Western Blotting

**Image 1.** Western blot analysis of extracts of various cell lines using MDFl Polyclonal Antibody at dilution of 1:3000.