



Datasheet for ABIN7257357 anti-CMAS antibody



[Go to Product page](#)

3 Images

Overview

| | |
|--------------|---------------------------------------------------|
| Quantity: | 200 µL |
| Target: | CMAS |
| Reactivity: | Human, Mouse, Rat |
| Host: | Rabbit |
| Clonality: | Polyclonal |
| Conjugate: | This CMAS antibody is un-conjugated |
| Application: | Western Blotting (WB), Immunohistochemistry (IHC) |

Product Details

| | |
|------------------|---------------------------------------------------------|
| Immunogen: | Recombinant fusion protein of human CMAS (NP_061156.1). |
| Isotype: | IgG |
| Characteristics: | Polyclonal Antibody |
| Purification: | Affinity purification |

Target Details

| | |
|-------------------|---------------------------------------------------------------------------------------------------------------------------------------------------------------------------------------------------------------------------------------------------------------------------------------------------------------------------------------------------------------------------|
| Target: | CMAS |
| Alternative Name: | CMAS (CMAS Products) |
| Background: | This gene encodes an enzyme that converts N-acetylneuraminic acid (NeuNAc) to cytidine 5'-monophosphate N-acetylneuraminic acid (CMP-NeuNAc). This process is important in the formation of sialylated glycoprotein and glycolipids. This modification plays a role in cell-cell communications and immune responses. Alternative splicing results in multiple transcript |

Target Details

variants.

Molecular Weight: Observed_MW: 48 kDa
Calculated_MW: 29 kDa/48 kDa

Gene ID: 55907

UniProt: [Q8NFW8](#)

Application Details

Application Notes: WB 1:500-1:2000 IHC 1:50-1:200

Restrictions: For Research Use only

Handling

Format: Liquid

Concentration: 1 mg/mL

Buffer: PBS with 0.02 % sodium azide, 50 % glycerol, pH 7.3

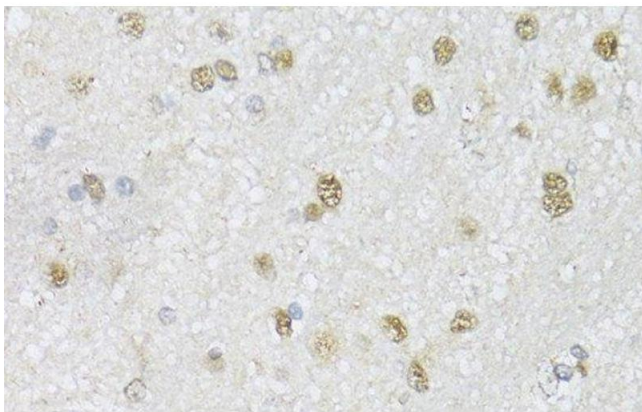
Preservative: Sodium azide

Precaution of Use: This product contains Sodium azide: a POISONOUS AND HAZARDOUS SUBSTANCE which should be handled by trained staff only.

Storage: -20 °C

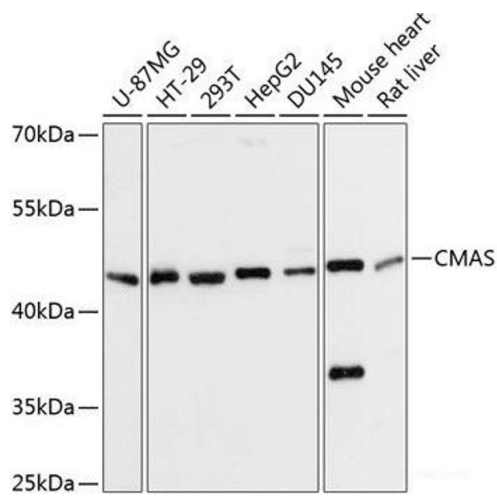
Storage Comment: Store at -20°C. Avoid freeze / thaw cycles.

Images



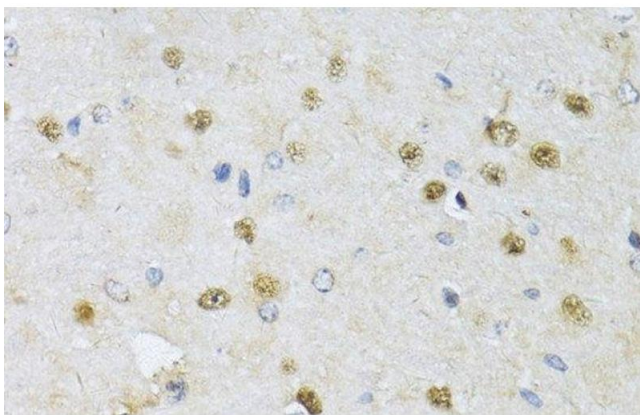
Immunohistochemistry (Paraffin-embedded Sections)

Image 1. Immunohistochemistry of paraffin-embedded Mouse brain using CMAS Polyclonal Antibody at dilution of 1:150 (40x lens).



Western Blotting

Image 2. Western blot analysis of extracts of various cell lines using CMAS Polyclonal Antibody at dilution of 1:3000.



Immunohistochemistry (Paraffin-embedded Sections)

Image 3. Immunohistochemistry of paraffin-embedded Rat brain using CMAS Polyclonal Antibody at dilution of 1:150 (40x lens).