



[Go to Product page](#)

Datasheet for ABIN7257375
anti-CYP1B1 antibody

4 Images

Overview

Quantity:	200 µL
Target:	CYP1B1
Reactivity:	Human, Mouse, Rat
Host:	Rabbit
Clonality:	Polyclonal
Conjugate:	This CYP1B1 antibody is un-conjugated
Application:	Western Blotting (WB), Immunofluorescence (IF)

Product Details

Immunogen:	Recombinant fusion protein of human CYP1B1 (NP_000095.2).
Isotype:	IgG
Characteristics:	Polyclonal Antibody
Purification:	Affinity purification

Target Details

Target:	CYP1B1
Alternative Name:	CYP1B1 (CYP1B1 Products)
Background:	This gene encodes a member of the cytochrome P450 superfamily of enzymes. The cytochrome P450 proteins are monooxygenases which catalyze many reactions involved in drug metabolism and synthesis of cholesterol, steroids and other lipids. The enzyme encoded by this gene localizes to the endoplasmic reticulum and metabolizes procarcinogens such as

Target Details

polycyclic aromatic hydrocarbons and 17beta-estradiol. Mutations in this gene have been associated with primary congenital glaucoma, therefore it is thought that the enzyme also metabolizes a signaling molecule involved in eye development, possibly a steroid.

Molecular Weight: Observed_MW: 60 kDa
Calculated_MW: 60 kDa

Gene ID: 1545

UniProt: [Q16678](#)

Pathways: [Steroid Hormone Biosynthesis](#)

Application Details

Application Notes: WB 1:500-1:2000 IF 1:50-1:100

Restrictions: For Research Use only

Handling

Format: Liquid

Concentration: 1 mg/mL

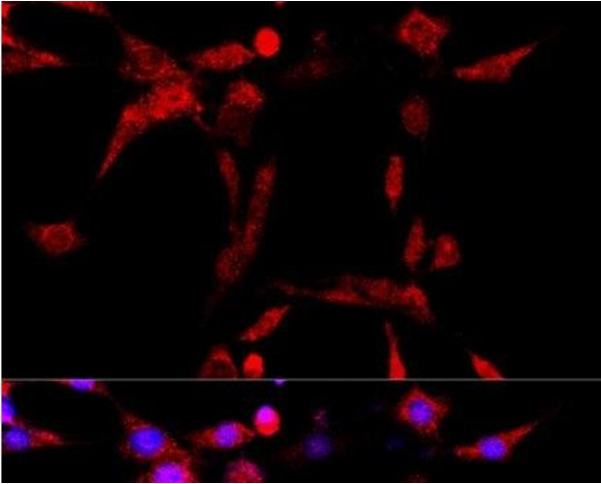
Buffer: PBS with 0.02 % sodium azide, 50 % glycerol, pH 7.3

Preservative: Sodium azide

Precaution of Use: This product contains Sodium azide: a POISONOUS AND HAZARDOUS SUBSTANCE which should be handled by trained staff only.

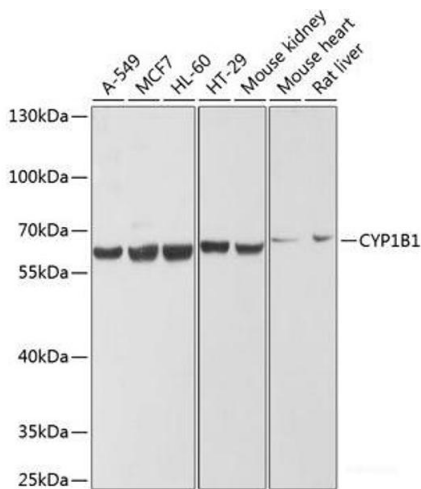
Storage: -20 °C

Storage Comment: Store at -20°C. Avoid freeze / thaw cycles.



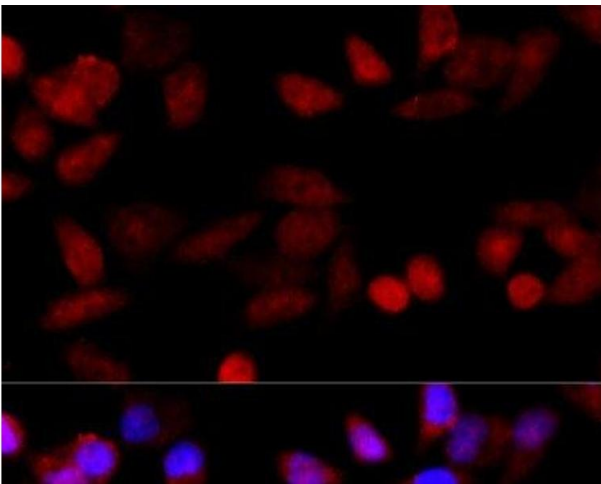
Immunofluorescence

Image 1. Immunofluorescence analysis of PC-12 cells using CYP1B1 Polyclonal Antibody at dilution of 1:100 (40x lens). Blue: DAPI for nuclear staining.



Western Blotting

Image 2. Western blot analysis of extracts of various cell lines using CYP1B1 Polyclonal Antibody at dilution of 1:1000.



Immunofluorescence

Image 3. Immunofluorescence analysis of HeLa cells using CYP1B1 Polyclonal Antibody at dilution of 1:100 (40x lens). Blue: DAPI for nuclear staining.

Please check the [product details page](#) for more images. Overall 4 images are available for ABIN7257375.