

Datasheet for ABIN7257401
anti-EFCAB4B antibody

2 Images

[Go to Product page](#)

Overview

Quantity:	200 µL
Target:	EFCAB4B
Reactivity:	Human, Mouse, Rat
Host:	Rabbit
Clonality:	Polyclonal
Conjugate:	This EFCAB4B antibody is un-conjugated
Application:	Western Blotting (WB), Immunohistochemistry (IHC)

Product Details

Immunogen:	Recombinant fusion protein of human CRACR2A (NP_001138430.1).
Isotype:	IgG
Characteristics:	Polyclonal Antibody
Purification:	Affinity purification

Target Details

Target:	EFCAB4B
Alternative Name:	CRACR2A (EFCAB4B Products)
Background:	Ca ²⁺ -binding protein that plays a key role in store-operated Ca ²⁺ entry (SOCE) in T-cells by regulating CRAC channel activation. Acts as a cytoplasmic calcium-sensor that facilitates the clustering of ORAI1 and STIM1 at the junctional regions between the plasma membrane and the endoplasmic reticulum upon low Ca ²⁺ concentration. It thereby regulates CRAC channel

Target Details

activation, including translocation and clustering of ORAI1 and STIM1. Upon increase of cytoplasmic Ca²⁺ resulting from opening of CRAC channels, dissociates from ORAI1 and STIM1, thereby destabilizing the ORAI1-STIM1 complex.

Molecular Weight: Observed_MW: 45 kDa
Calculated_MW: 45 kDa/83 kDa

Gene ID: 84766

UniProt: [Q9BSW2](#)

Application Details

Application Notes: WB 1:500-1:2000 IHC 1:50-1:200

Restrictions: For Research Use only

Handling

Format: Liquid

Concentration: 1 mg/mL

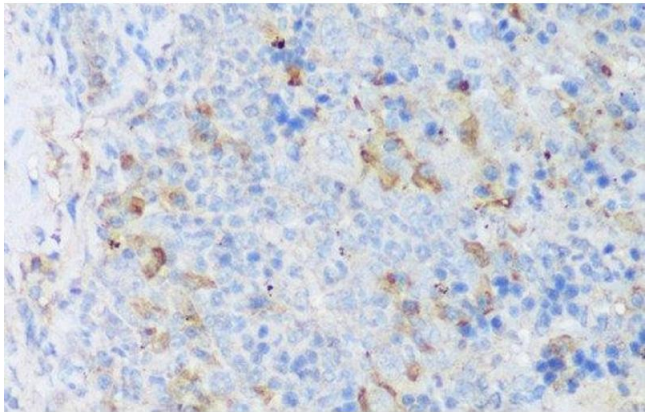
Buffer: PBS with 0.02 % sodium azide, 50 % glycerol, pH 7.3

Preservative: Sodium azide

Precaution of Use: This product contains Sodium azide: a POISONOUS AND HAZARDOUS SUBSTANCE which should be handled by trained staff only.

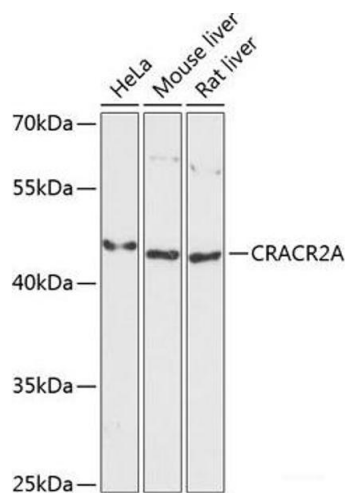
Storage: -20 °C

Storage Comment: Store at -20°C. Avoid freeze / thaw cycles.



Immunohistochemistry (Paraffin-embedded Sections)

Image 1. Immunohistochemistry of paraffin-embedded Mouse spleen using CRACR2A Polyclonal Antibody at dilution of 1:150 (40x lens).



Western Blotting

Image 2. Western blot analysis of extracts of various cell lines using CRACR2A Polyclonal Antibody at dilution of 1:3000.