

Datasheet for ABIN7257407

**anti-GANAB antibody**

8 Images

[Go to Product page](#)

## Overview

Quantity:	200 µL
Target:	GANAB
Reactivity:	Human, Mouse, Rat
Host:	Rabbit
Clonality:	Polyclonal
Conjugate:	This GANAB antibody is un-conjugated
Application:	Immunohistochemistry (IHC), Immunofluorescence (IF)

## Product Details

Immunogen:	Recombinant fusion protein of human GANAB (NP_001265123.1).
Isotype:	IgG
Characteristics:	Polyclonal Antibody
Purification:	Affinity purification

## Target Details

Target:	GANAB
Alternative Name:	GANAB ( <a href="#">GANAB Products</a> )
Background:	This gene encodes the alpha subunit of glucosidase II and a member of the glycosyl hydrolase 31 family of proteins. The heterodimeric enzyme glucosidase II plays a role in protein folding and quality control by cleaving glucose residues from immature glycoproteins in the endoplasmic reticulum. Expression of the encoded protein is elevated in lung tumor tissue and

## Target Details

in response to UV irradiation. Mutations in this gene cause autosomal-dominant polycystic kidney and liver disease.

Gene ID: 23193

UniProt: [Q14697](#)

## Application Details

Application Notes: IHC 1:50-1:200 IF 1:50-1:200

Restrictions: For Research Use only

## Handling

Format: Liquid

Concentration: 1 mg/mL

Buffer: PBS with 0.02 % sodium azide, 50 % glycerol, pH 7.3

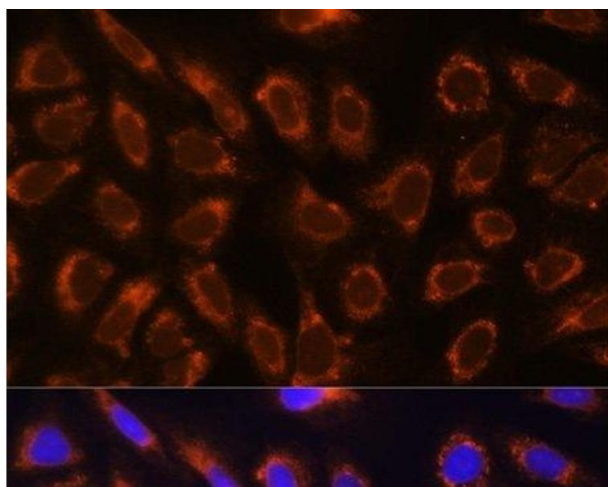
Preservative: Sodium azide

Precaution of Use: This product contains Sodium azide: a POISONOUS AND HAZARDOUS SUBSTANCE which should be handled by trained staff only.

Storage: -20 °C

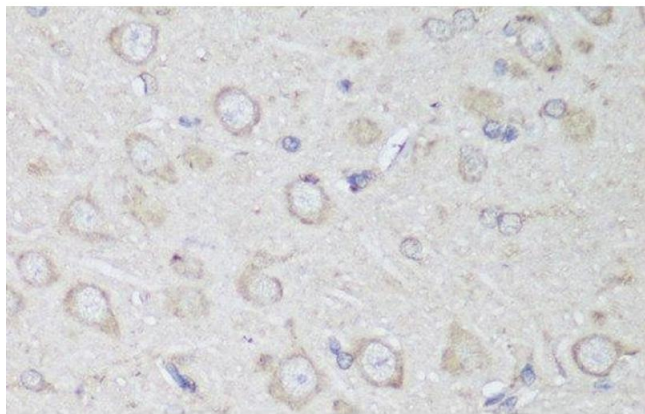
Storage Comment: Store at -20°C. Avoid freeze / thaw cycles.

## Images



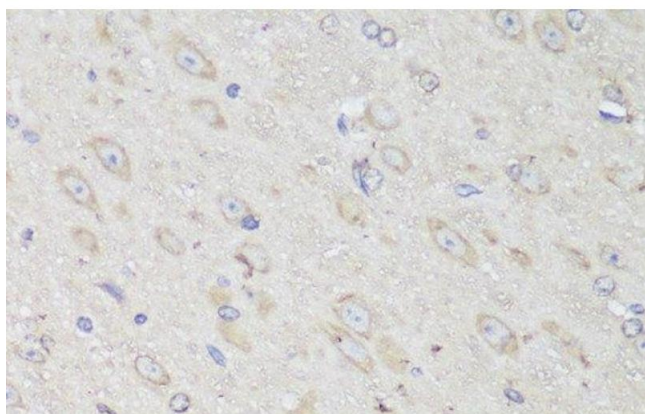
### Immunofluorescence

**Image 1.** Immunofluorescence analysis of U-2 OS cells using GANAB Polyclonal Antibody at dilution of 1:100. Blue: DAPI for nuclear staining.



### Immunohistochemistry (Paraffin-embedded Sections)

**Image 2.** Immunohistochemistry of paraffin-embedded Rat brain using GANAB Polyclonal Antibody at dilution of 1:150 (40x lens).



### Immunohistochemistry (Paraffin-embedded Sections)

**Image 3.** Immunohistochemistry of paraffin-embedded Mouse brain using GANAB Polyclonal Antibody at dilution of 1:150 (40x lens).

Please check the [product details page](#) for more images. Overall 8 images are available for ABIN7257407.