



## Datasheet for ABIN7257409 anti-GPAA1 antibody



[Go to Product page](#)

### 1 Image

#### Overview

Quantity:	200 µL
Target:	GPAA1
Reactivity:	Mouse
Host:	Rabbit
Clonality:	Polyclonal
Conjugate:	This GPAA1 antibody is un-conjugated
Application:	Western Blotting (WB)

#### Product Details

Immunogen:	Recombinant fusion protein of human GPAA1 (NP_003792.1).
Isotype:	IgG
Characteristics:	Polyclonal Antibody
Purification:	Affinity purification

#### Target Details

Target:	GPAA1
Alternative Name:	GPAA1 ( <a href="#">GPAA1 Products</a> )
Background:	Posttranslational glycosylphosphatidylinositol (GPI) anchor attachment serves as a general mechanism for linking proteins to the cell surface membrane. The protein encoded by this gene presumably functions in GPI anchoring at the GPI transfer step. The mRNA transcript is ubiquitously expressed in both fetal and adult tissues. The anchor attachment protein 1

## Target Details

---

contains an N-terminal signal sequence, 1 cAMP- and cGMP-dependent protein kinase phosphorylation site, 1 leucine zipper pattern, 2 potential N-glycosylation sites, and 8 putative transmembrane domains.

Molecular Weight: Observed\_MW: 68 kDa  
Calculated\_MW: 61 kDa/67 kDa

Gene ID: 8733

UniProt: [O43292](#)

Pathways: [Inositol Metabolic Process](#), [Maintenance of Protein Location](#), [SARS-CoV-2 Protein Interactome](#)

## Application Details

---

Application Notes: WB 1:500-1:2000

Restrictions: For Research Use only

## Handling

---

Format: Liquid

Concentration: 1 mg/mL

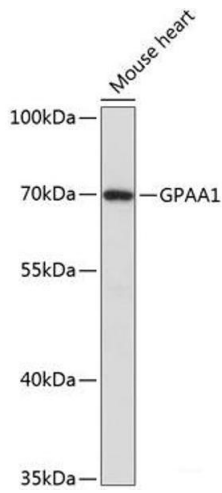
Buffer: PBS with 0.02 % sodium azide, 50 % glycerol, pH 7.3

Preservative: Sodium azide

Precaution of Use: This product contains Sodium azide: a POISONOUS AND HAZARDOUS SUBSTANCE which should be handled by trained staff only.

Storage: -20 °C

Storage Comment: Store at -20°C. Avoid freeze / thaw cycles.



### Western Blotting

**Image 1.** Western blot analysis of extracts of Mouse heart using GPAA1 Polyclonal Antibody at dilution of 1:3000.