

Datasheet for ABIN7257455

anti-DYNLL2 antibody[Go to Product page](#)**1** Image

Overview

Quantity:	200 µL
Target:	DYNLL2
Reactivity:	Mouse, Rat
Host:	Rabbit
Clonality:	Polyclonal
Conjugate:	This DYNLL2 antibody is un-conjugated
Application:	Western Blotting (WB)

Product Details

Immunogen:	Recombinant fusion protein of human DYNLL2 (NP_542408.1).
Isotype:	IgG
Characteristics:	Polyclonal Antibody
Purification:	Affinity purification

Target Details

Target:	DYNLL2
Alternative Name:	DYNLL2 (DYNLL2 Products)
Background:	Dynein light chain 2, cytoplasmic is a protein that in humans is encoded by the DYNLL2 gene. Acts as one of several non-catalytic accessory components of the cytoplasmic dynein 1 complex that are thought to be involved in linking dynein to cargos and to adapter proteins that regulate dynein function. Cytoplasmic dynein 1 acts as a motor for the intracellular retrograde motility of

Target Details

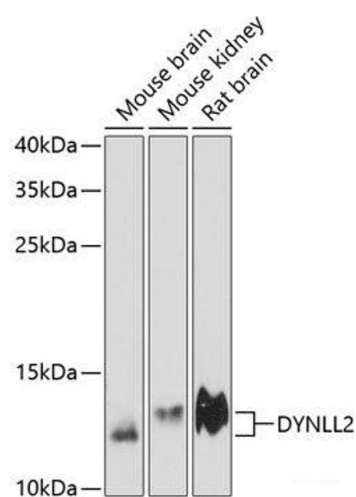
	vesicles and organelles along microtubules.
Molecular Weight:	Observed_MW: 13 kDa Calculated_MW: 10 kDa
Gene ID:	140735
UniProt:	Q96FJ2
Pathways:	M Phase

Application Details

Application Notes:	WB 1:500-1:2000
Restrictions:	For Research Use only

Handling

Format:	Liquid
Concentration:	1 mg/mL
Buffer:	PBS with 0.02 % sodium azide, 50 % glycerol, pH 7.3
Preservative:	Sodium azide
Precaution of Use:	This product contains Sodium azide: a POISONOUS AND HAZARDOUS SUBSTANCE which should be handled by trained staff only.
Storage:	-20 °C
Storage Comment:	Store at -20°C. Avoid freeze / thaw cycles.



Western Blotting

Image 1. Western blot analysis of extracts of various cell lines using DYNLL2 Polyclonal Antibody at dilution of 1:3000.