

Datasheet for ABIN7257481
anti-Aquaporin 4 antibody

4 Images

[Go to Product page](#)

Overview

Quantity:	200 µL
Target:	Aquaporin 4 (AQP4)
Reactivity:	Human, Mouse, Rat
Host:	Rabbit
Clonality:	Polyclonal
Conjugate:	This Aquaporin 4 antibody is un-conjugated
Application:	Western Blotting (WB), Immunohistochemistry (IHC)

Product Details

Immunogen:	Recombinant fusion protein of human Aquaporin 4 (NP_001641.1).
Isotype:	IgG
Characteristics:	Polyclonal Antibody
Purification:	Affinity purification

Target Details

Target:	Aquaporin 4 (AQP4)
Alternative Name:	Aquaporin 4 (AQP4 Products)
Background:	This gene encodes a member of the aquaporin family of intrinsic membrane proteins that function as water-selective channels in the plasma membranes of many cells. This protein is the predominant aquaporin found in brain and has an important role in brain water homeostasis. Alternatively spliced transcript variants encoding different isoforms have been

Target Details

described for this gene. A recent study provided evidence for translational readthrough in this gene and expression of an additional C-terminally extended isoform via the use of an alternative in-frame translation termination codon.

Molecular Weight: Observed_MW: 35 kDa
Calculated_MW: 32 kDa/34 kDa

Gene ID: 361

UniProt: [P55087](#)

Pathways: [Sensory Perception of Sound](#)

Application Details

Application Notes: WB 1:500-1:2000 IHC 1:50-1:200

Restrictions: For Research Use only

Handling

Format: Liquid

Concentration: 1 mg/mL

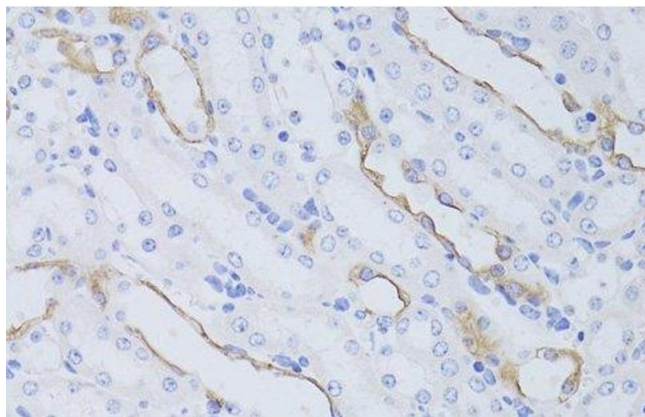
Buffer: PBS with 0.02 % sodium azide, 50 % glycerol, pH 7.3

Preservative: Sodium azide

Precaution of Use: This product contains Sodium azide: a POISONOUS AND HAZARDOUS SUBSTANCE which should be handled by trained staff only.

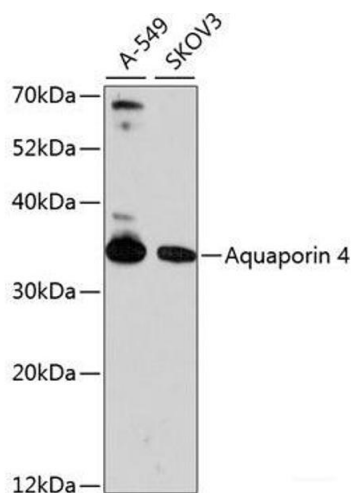
Storage: -20 °C

Storage Comment: Store at -20°C. Avoid freeze / thaw cycles.



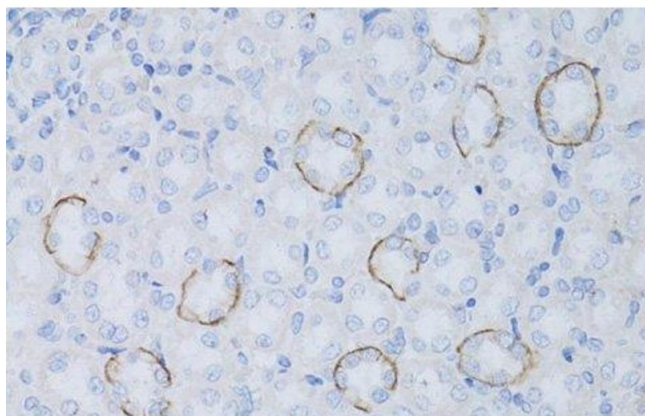
Immunohistochemistry (Paraffin-embedded Sections)

Image 1. Immunohistochemistry of paraffin-embedded Mouse kidney using Aquaporin 4 Polyclonal Antibody at dilution of 1:50 (40x lens).



Western Blotting

Image 2. Western blot analysis of extracts of various cell lines using Aquaporin 4 Polyclonal Antibody at dilution of 1:1000.



Immunohistochemistry (Paraffin-embedded Sections)

Image 3. Immunohistochemistry of paraffin-embedded Rat kidney using Aquaporin 4 Polyclonal Antibody at dilution of 1:50 (40x lens).

Please check the [product details page](#) for more images. Overall 4 images are available for ABIN7257481.