

Datasheet for ABIN7257521
anti-SLC25A20 antibody[Go to Product page](#)

1 Image

Overview

Quantity:	200 µL
Target:	SLC25A20
Reactivity:	Mouse
Host:	Rabbit
Clonality:	Polyclonal
Conjugate:	This SLC25A20 antibody is un-conjugated
Application:	Western Blotting (WB)

Product Details

Immunogen:	Recombinant fusion protein of human SLC25A20 (NP_000378.1).
Isotype:	IgG
Characteristics:	Polyclonal Antibody
Purification:	Affinity purification

Target Details

Target:	SLC25A20
Alternative Name:	SLC25A20 (SLC25A20 Products)
Background:	This gene product is one of several closely related mitochondrial-membrane carrier proteins that shuttle substrates between cytosol and the intramitochondrial matrix space. This protein mediates the transport of acylcarnitines into mitochondrial matrix for their oxidation by the mitochondrial fatty acid-oxidation pathway. Mutations in this gene are associated with

Target Details

carnitine-acylcarnitine translocase deficiency, which can cause a variety of pathological conditions such as hypoglycemia, cardiac arrest, hepatomegaly, hepatic dysfunction and muscle weakness, and is usually lethal in new born and infants.

Molecular Weight: Observed_MW: 39 kDa
Calculated_MW: 32 kDa

Gene ID: 788

UniProt: [O43772](#)

Pathways: [TCR Signaling](#), [Production of Molecular Mediator of Immune Response](#), [Maintenance of Protein Location](#), [Toll-Like Receptors Cascades](#)

Application Details

Application Notes: WB 1:500-1:2000

Restrictions: For Research Use only

Handling

Format: Liquid

Concentration: 1 mg/mL

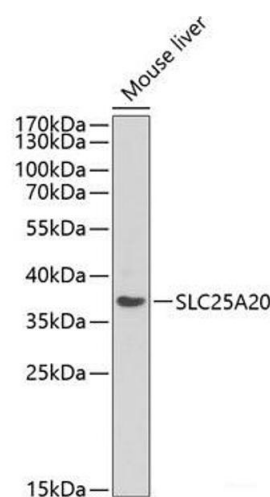
Buffer: PBS with 0.02 % sodium azide, 50 % glycerol, pH 7.3

Preservative: Sodium azide

Precaution of Use: This product contains Sodium azide: a POISONOUS AND HAZARDOUS SUBSTANCE which should be handled by trained staff only.

Storage: -20 °C

Storage Comment: Store at -20°C. Avoid freeze / thaw cycles.



Western Blotting

Image 1. Western blot analysis of extracts of Mouse liver using SLC25A20 Polyclonal Antibody at dilution of 1:1000.