

Datasheet for ABIN7257523

anti-CDA antibody

7 Images

[Go to Product page](#)

Overview

| | |
|--------------|--|
| Quantity: | 200 µL |
| Target: | CDA |
| Reactivity: | Human, Mouse |
| Host: | Rabbit |
| Clonality: | Polyclonal |
| Conjugate: | This CDA antibody is un-conjugated |
| Application: | Western Blotting (WB), Immunohistochemistry (IHC), Immunofluorescence (IF) |

Product Details

| | |
|------------------|--|
| Immunogen: | Recombinant fusion protein of human CDA (NP_001776.1). |
| Isotype: | IgG |
| Characteristics: | Polyclonal Antibody |
| Purification: | Affinity purification |

Target Details

| | |
|-------------------|--|
| Target: | CDA |
| Alternative Name: | CDA (CDA Products) |
| Background: | This gene encodes an enzyme involved in pyrimidine salvaging. The encoded protein forms a homotetramer that catalyzes the irreversible hydrolytic deamination of cytidine and deoxycytidine to uridine and deoxyuridine, respectively. It is one of several deaminases responsible for maintaining the cellular pyrimidine pool. Mutations in this gene are associated |

Target Details

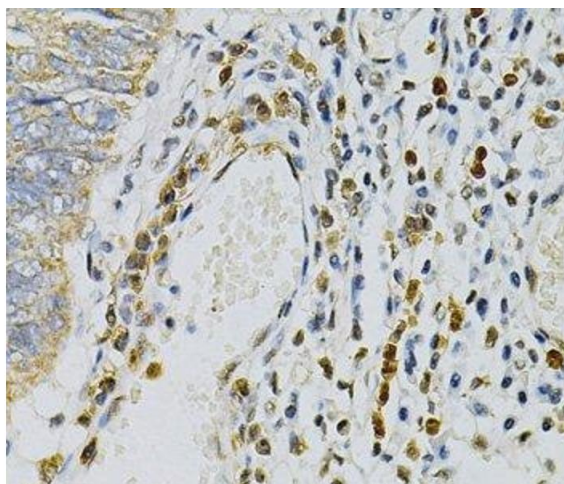
| | |
|-------------------|---|
| | with decreased sensitivity to the cytosine nucleoside analogue cytosine arabinoside used in the treatment of certain childhood leukemias. |
| Molecular Weight: | Observed_MW: 15 kDa/35 kDa/65 kDa Calculated_MW: 16 kDa |
| Gene ID: | 978 |
| UniProt: | P32320 |

Application Details

| | |
|--------------------|--|
| Application Notes: | WB 1:500-1:2000 IHC 1:50-1:200 IF 1:50-1:100 |
| Restrictions: | For Research Use only |

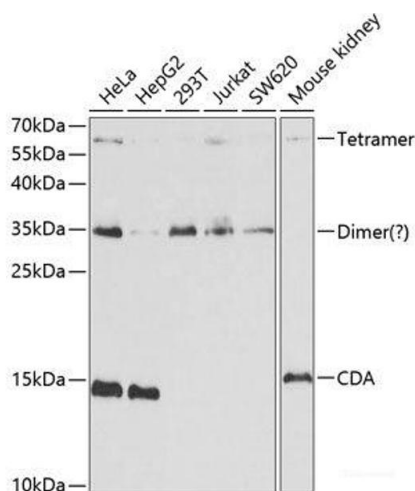
Handling

| | |
|--------------------|--|
| Format: | Liquid |
| Concentration: | 1 mg/mL |
| Buffer: | PBS with 0.02 % sodium azide, 50 % glycerol, pH 7.3 |
| Preservative: | Sodium azide |
| Precaution of Use: | This product contains Sodium azide: a POISONOUS AND HAZARDOUS SUBSTANCE which should be handled by trained staff only. |
| Storage: | -20 °C |
| Storage Comment: | Store at -20°C. Avoid freeze / thaw cycles. |



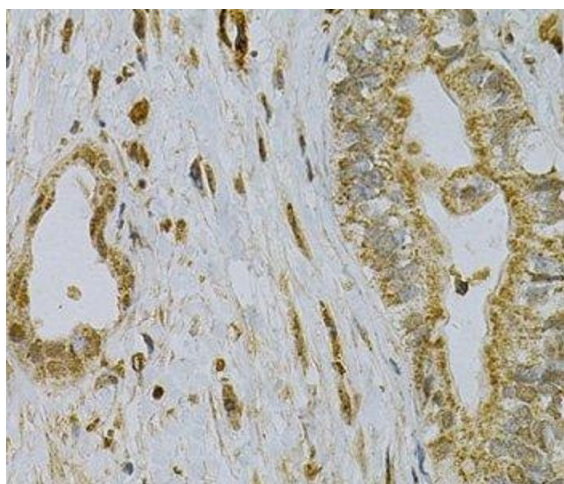
Immunohistochemistry (Paraffin-embedded Sections)

Image 1. Immunohistochemistry of paraffin-embedded Human colon carcinoma using CDA Polyclonal Antibody at dilution of 1:100 (40x lens).



Western Blotting

Image 2. Western blot analysis of extracts of various cell lines using CDA Polyclonal Antibody at dilution of 1:1000.



Immunohistochemistry (Paraffin-embedded Sections)

Image 3. Immunohistochemistry of paraffin-embedded Human liver cancer using CDA Polyclonal Antibody at dilution of 1:100 (40x lens).

Please check the [product details page](#) for more images. Overall 7 images are available for ABIN7257523.