

Datasheet for ABIN7257537

**anti-EBF1 antibody**[Go to Product page](#)**1** Image

## Overview

Quantity:	200 µL
Target:	EBF1
Reactivity:	Mouse
Host:	Rabbit
Clonality:	Polyclonal
Conjugate:	This EBF1 antibody is un-conjugated
Application:	Western Blotting (WB)

## Product Details

Immunogen:	A synthetic peptide of human EBF1 (NP_076870.1).
Isotype:	IgG
Characteristics:	Polyclonal Antibody
Purification:	Affinity purification

## Target Details

Target:	EBF1
Alternative Name:	EBF1 ( <a href="#">EBF1 Products</a> )
Background:	EBF1 (EBF Transcription Factor 1) is a Protein Coding gene. Diseases associated with EBF1 include Plasmacytoma and Breast Abscess. Among its related pathways are Regulation of lipid metabolism by Peroxisome proliferator-activated receptor alpha (PPARalpha) and Developmental Biology. Gene Ontology (GO) annotations related to this gene include DNA-

## Target Details

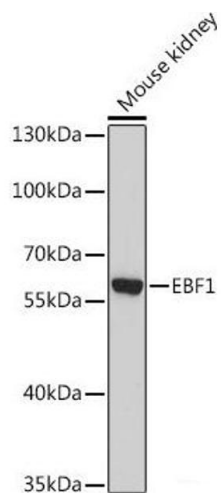
	binding transcription factor activity and C2H2 zinc finger domain binding. An important paralog of this gene is EBF3.
Molecular Weight:	Observed_MW: 61 kDa Calculated_MW: 61 kDa/64 kDa
Gene ID:	1879
UniProt:	<a href="#">Q9UH73</a>

## Application Details

Application Notes:	WB 1:500-1:2000
Restrictions:	For Research Use only

## Handling

Format:	Liquid
Concentration:	1 mg/mL
Buffer:	PBS with 0.02 % sodium azide, 50 % glycerol, pH 7.3
Preservative:	Sodium azide
Precaution of Use:	This product contains Sodium azide: a POISONOUS AND HAZARDOUS SUBSTANCE which should be handled by trained staff only.
Storage:	-20 °C
Storage Comment:	Store at -20°C. Avoid freeze / thaw cycles.



#### Western Blotting

**Image 1.** Western blot analysis of extracts of Mouse kidney using EBF1 Polyclonal Antibody at dilution of 1:1000.