



Datasheet for ABIN7257541 anti-Stomatin antibody



[Go to Product page](#)

1 Image

Overview

| | |
|--------------|---|
| Quantity: | 200 µL |
| Target: | Stomatin (STOM) |
| Reactivity: | Human, Mouse, Rat |
| Host: | Rabbit |
| Clonality: | Polyclonal |
| Conjugate: | This Stomatin antibody is un-conjugated |
| Application: | Western Blotting (WB) |

Product Details

| | |
|------------------|---|
| Immunogen: | Recombinant fusion protein of human STOM (NP_004090.4). |
| Isotype: | IgG |
| Characteristics: | Polyclonal Antibody |
| Purification: | Affinity purification |

Target Details

| | |
|-------------------|---|
| Target: | Stomatin (STOM) |
| Alternative Name: | STOM (STOM Products) |
| Background: | This gene encodes a member of a highly conserved family of integral membrane proteins. The encoded protein localizes to the cell membrane of red blood cells and other cell types, where it may regulate ion channels and transporters. Loss of localization of the encoded protein is associated with hereditary stomatocytosis, a form of hemolytic anemia. There is a pseudogene |

Target Details

for this gene on chromosome 6. Alternative splicing results in multiple transcript variants.

Molecular Weight: Observed_MW: 36 kDa
Calculated_MW: 13 kDa/31 kDa

Gene ID: 2040

UniProt: [P27105](#)

Pathways: [SARS-CoV-2 Protein Interactome](#)

Application Details

Application Notes: WB 1:500-1:2000

Restrictions: For Research Use only

Handling

Format: Liquid

Concentration: 1 mg/mL

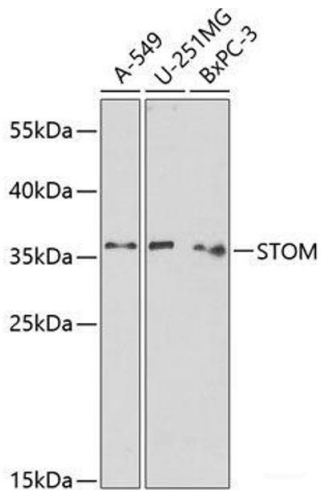
Buffer: PBS with 0.02 % sodium azide, 50 % glycerol, pH 7.3

Preservative: Sodium azide

Precaution of Use: This product contains Sodium azide: a POISONOUS AND HAZARDOUS SUBSTANCE which should be handled by trained staff only.

Storage: -20 °C

Storage Comment: Store at -20°C. Avoid freeze / thaw cycles.



Western Blotting

Image 1. Western blot analysis of extracts of various cell lines using STOM Polyclonal Antibody at dilution of 1:1000.