



Datasheet for ABIN7257597 anti-PDHA2 antibody



[Go to Product page](#)

1 Image

Overview

Quantity:	200 µL
Target:	PDHA2 (PDHa2)
Reactivity:	Human, Mouse, Rat
Host:	Rabbit
Clonality:	Polyclonal
Conjugate:	This PDHA2 antibody is un-conjugated
Application:	Western Blotting (WB)

Product Details

Immunogen:	Recombinant fusion protein of human PDHA2 (NP_005381.1).
Isotype:	IgG
Characteristics:	Polyclonal Antibody
Purification:	Affinity purification

Target Details

Target:	PDHA2 (PDHa2)
Alternative Name:	PDHA2 (PDHa2 Products)
Background:	PDHA2 (Pyruvate Dehydrogenase E1 Subunit Alpha 2) is a Protein Coding gene. Diseases associated with PDHA2 include Spermatogenic Failure 1. Among its related pathways are Glucose metabolism and Citrate cycle (TCA cycle). Gene Ontology (GO) annotations related to this gene include oxidoreductase activity, acting on the aldehyde or oxo group of donors,

Target Details

disulfide as acceptor and pyruvate dehydrogenase (acetyl-transferring) activity. An important paralog of this gene is PDHA1.

Molecular Weight: Observed_MW: 43 kDa
Calculated_MW: 42 kDa

Gene ID: 5161

UniProt: [P29803](#)

Pathways: [Warburg Effect](#)

Application Details

Application Notes: WB 1:500-1:2000

Restrictions: For Research Use only

Handling

Format: Liquid

Concentration: 1 mg/mL

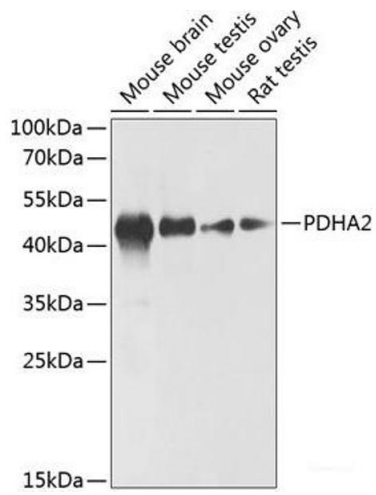
Buffer: PBS with 0.02 % sodium azide, 50 % glycerol, pH 7.3

Preservative: Sodium azide

Precaution of Use: This product contains Sodium azide: a POISONOUS AND HAZARDOUS SUBSTANCE which should be handled by trained staff only.

Storage: -20 °C

Storage Comment: Store at -20°C. Avoid freeze / thaw cycles.



Western Blotting

Image 1. Western blot analysis of extracts of various cell lines using PDHA2 Polyclonal Antibody at dilution of 1:1000.