



Datasheet for ABIN7257653

## anti-Double-stranded RNA-binding protein Staufen homolog 2 (STAU2) antibody



[Go to Product page](#)

### 1 Image

#### Overview

Quantity:	200 µL
Target:	Double-stranded RNA-binding protein Staufen homolog 2 (STAU2)
Reactivity:	Human, Rat, Mouse
Host:	Rabbit
Clonality:	Polyclonal
Conjugate:	Un-conjugated
Application:	Immunofluorescence (IF)

#### Product Details

Immunogen:	A synthetic peptide of human STAU2 (NP_001157852.1).
Isotype:	IgG
Characteristics:	Polyclonal Antibody
Purification:	Affinity purification

#### Target Details

Target:	Double-stranded RNA-binding protein Staufen homolog 2 (STAU2)
Alternative Name:	STAU2 ( <a href="#">STAU2 Products</a> )
Background:	Staufen homolog 2 is a member of the family of double-stranded RNA (dsRNA)-binding proteins involved in the transport and/or localization of mRNAs to different subcellular compartments and/or organelles. These proteins are characterized by the presence of multiple dsRNA-binding domains which are required to bind RNAs having double-stranded secondary

## Target Details

---

structures. Staufen homolog 2 shares 48.5 % and 59.9 % similarity with drosophila and human staufen, respectively. The exact function of Staufen homolog 2 is not known, but since it contains 3 copies of conserved dsRNA binding domain, it could be involved in double-stranded RNA binding events. Several transcript variants encoding different isoforms have been found for this gene.

Gene ID: 27067

UniProt: [Q9NUL3](#)

## Application Details

---

Application Notes: IF 1:50-1:200

Restrictions: For Research Use only

## Handling

---

Format: Liquid

Concentration: 1 mg/mL

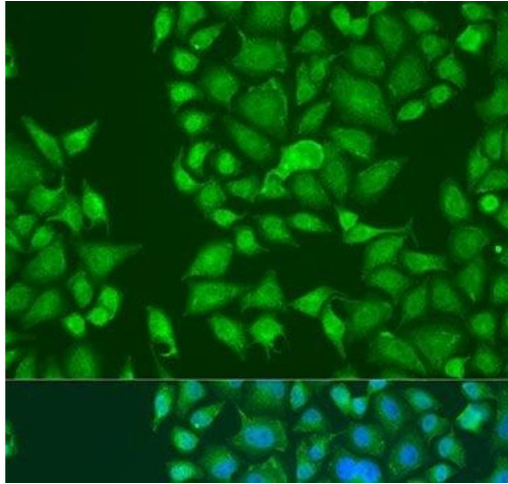
Buffer: PBS with 0.02 % sodium azide, 50 % glycerol, pH 7.3

Preservative: Sodium azide

Precaution of Use: This product contains Sodium azide: a POISONOUS AND HAZARDOUS SUBSTANCE which should be handled by trained staff only.

Storage: -20 °C

Storage Comment: Store at -20°C. Avoid freeze / thaw cycles.



### Immunofluorescence

**Image 1.** Immunofluorescence analysis of U2OS cells using STAU2 Polyclonal Antibody at dilution of 1:100. Blue: DAPI for nuclear staining.