

Datasheet for ABIN7257659

**anti-MRPL13 antibody**[Go to Product page](#)**2** Images

## Overview

Quantity:	200 µL
Target:	MRPL13
Reactivity:	Human, Mouse, Rat
Host:	Rabbit
Clonality:	Polyclonal
Conjugate:	This MRPL13 antibody is un-conjugated
Application:	Western Blotting (WB), Immunohistochemistry (IHC)

## Product Details

Immunogen:	Recombinant fusion protein of human MRPL13 (NP_054797.2).
Isotype:	IgG
Characteristics:	Polyclonal Antibody
Purification:	Affinity purification

## Target Details

Target:	MRPL13
Alternative Name:	MRPL13 ( <a href="#">MRPL13 Products</a> )
Background:	Mammalian mitochondrial ribosomal proteins are encoded by nuclear genes and help in protein synthesis within the mitochondrion. Mitochondrial ribosomes (mitoribosomes) consist of a small 28S subunit and a large 39S subunit. They have an estimated 75 % protein to rRNA composition compared to prokaryotic ribosomes, where this ratio is reversed. Another

## Target Details

difference between mammalian mitoribosomes and prokaryotic ribosomes is that the latter contain a 5S rRNA. Among different species, the proteins comprising the mitoribosome differ greatly in sequence, and sometimes in biochemical properties, which prevents easy recognition by sequence homology. This gene encodes a 39S subunit protein.

Molecular Weight: Observed\_MW: 20 kDa  
Calculated\_MW: 20 kDa

Gene ID: 28998

UniProt: [Q9BYD1](#)

## Application Details

Application Notes: WB 1:500-1:2000 IHC 1:100-1:200

Restrictions: For Research Use only

## Handling

Format: Liquid

Concentration: 1 mg/mL

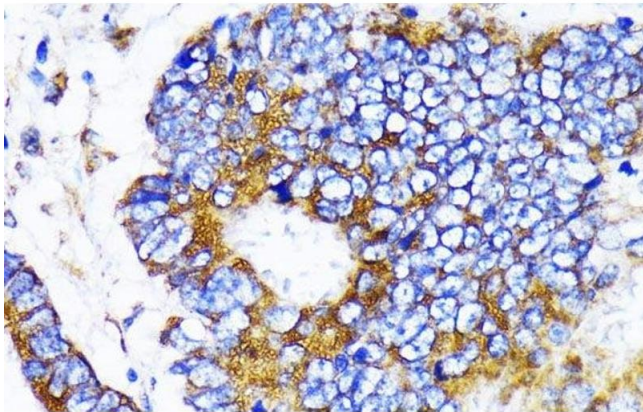
Buffer: PBS with 0.02 % sodium azide, 50 % glycerol, pH 7.3

Preservative: Sodium azide

Precaution of Use: This product contains Sodium azide: a POISONOUS AND HAZARDOUS SUBSTANCE which should be handled by trained staff only.

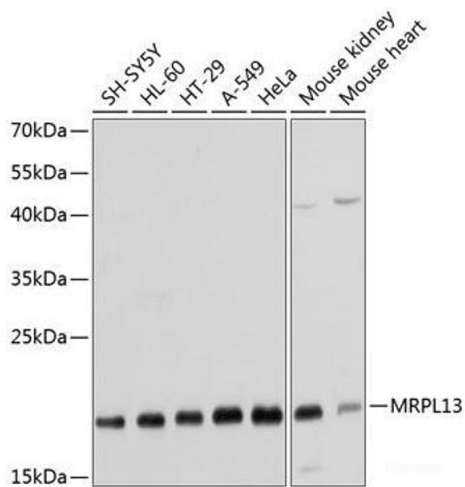
Storage: -20 °C

Storage Comment: Store at -20°C. Avoid freeze / thaw cycles.



Immunohistochemistry (Paraffin-embedded Sections)

**Image 1.** Immunohistochemistry of paraffin-embedded Human colon carcinoma using MRPL13 Polyclonal Antibody at dilution of 1:100 (40x lens).



Western Blotting

**Image 2.** Western blot analysis of extracts of various cell lines using MRPL13 Polyclonal Antibody at dilution of 1:1000.