



[Go to Product page](#)

Datasheet for ABIN7257661

## anti-PSAT1 antibody

### 2 Images

#### Overview

Quantity:	200 µL
Target:	PSAT1
Reactivity:	Human, Mouse, Rat
Host:	Rabbit
Clonality:	Polyclonal
Conjugate:	This PSAT1 antibody is un-conjugated
Application:	Immunohistochemistry (IHC)

#### Product Details

Immunogen:	Recombinant fusion protein of human PSAT1 (NP_478059.1).
Isotype:	IgG
Characteristics:	Polyclonal Antibody
Purification:	Affinity purification

#### Target Details

Target:	PSAT1
Alternative Name:	PSAT1 ( <a href="#">PSAT1 Products</a> )
Background:	This gene encodes a member of the class-V pyridoxal-phosphate-dependent aminotransferase family. The encoded protein is a phosphoserine aminotransferase and decreased expression may be associated with schizophrenia. Mutations in this gene are also associated with phosphoserine aminotransferase deficiency. Alternative splicing results in multiple transcript

## Target Details

variants. Pseudogenes of this gene have been defined on chromosomes 1, 3, and 8.

Gene ID: 29968

UniProt: [Q9Y617](#)

Pathways: [Warburg Effect](#)

## Application Details

Application Notes: IHC 1:50-1:200

Restrictions: For Research Use only

## Handling

Format: Liquid

Concentration: 1 mg/mL

Buffer: PBS with 0.02 % sodium azide, 50 % glycerol, pH 7.3

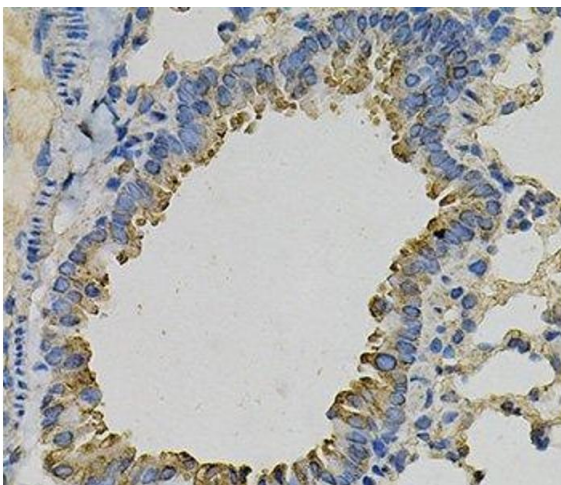
Preservative: Sodium azide

Precaution of Use: This product contains Sodium azide: a POISONOUS AND HAZARDOUS SUBSTANCE which should be handled by trained staff only.

Storage: -20 °C

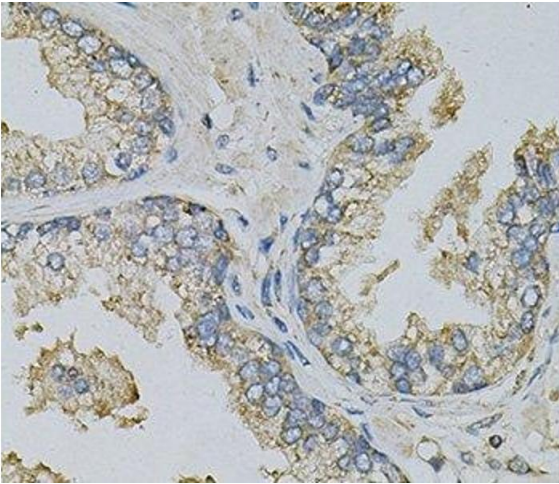
Storage Comment: Store at -20°C. Avoid freeze / thaw cycles.

## Images



### Immunohistochemistry (Paraffin-embedded Sections)

**Image 1.** Immunohistochemistry of paraffin-embedded Mouse lung using PSAT1 Polyclonal Antibody at dilution of 1:100 (40x lens).



### Immunohistochemistry (Paraffin-embedded Sections)

**Image 2.** Immunohistochemistry of paraffin-embedded Human prostate using PSAT1 Polyclonal Antibody at dilution of 1:100 (40x lens).