

Datasheet for ABIN7257703

**anti-MYL2 antibody****1** Image[Go to Product page](#)

## Overview

Quantity:	200 µL
Target:	MYL2
Reactivity:	Mouse, Rat
Host:	Rabbit
Clonality:	Polyclonal
Conjugate:	This MYL2 antibody is un-conjugated
Application:	Western Blotting (WB)

## Product Details

Immunogen:	Recombinant protein of human MYL2
Isotype:	IgG
Characteristics:	Polyclonal Antibody
Purification:	Affinity purification

## Target Details

Target:	MYL2
Alternative Name:	MYL2 ( <a href="#">MYL2 Products</a> )
Background:	Thus gene encodes the regulatory light chain associated with cardiac myosin beta (or slow) heavy chain. Ca <sup>+</sup> triggers the phosphorylation of regulatory light chain that in turn triggers contraction. Mutations in this gene are associated with mid-left ventricular chamber type hypertrophic cardiomyopathy.

## Target Details

Molecular Weight:	Observed_MW: 19 kDa
	Calculated_MW: 18 kDa
Gene ID:	4633
UniProt:	<a href="#">P10916</a>
Pathways:	<a href="#">Myometrial Relaxation and Contraction</a>

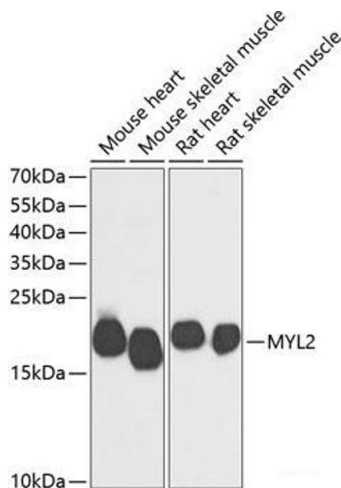
## Application Details

Application Notes:	WB 1:500-1:2000
Restrictions:	For Research Use only

## Handling

Format:	Liquid
Concentration:	1 mg/mL
Buffer:	PBS with 0.02 % sodium azide, 50 % glycerol, pH 7.3
Preservative:	Sodium azide
Precaution of Use:	This product contains Sodium azide: a POISONOUS AND HAZARDOUS SUBSTANCE which should be handled by trained staff only.
Storage:	-20 °C
Storage Comment:	Store at -20°C. Avoid freeze / thaw cycles.

## Images



### Western Blotting

**Image 1.** Western blot analysis of extracts of various cell lines using MYL2 Polyclonal Antibody at dilution of 1:500.