

Datasheet for ABIN7257752
anti-HMGCS2 antibody

6 Images

[Go to Product page](#)

Overview

Quantity:	200 µL
Target:	HMGCS2
Reactivity:	Human, Mouse, Rat
Host:	Rabbit
Clonality:	Polyclonal
Conjugate:	This HMGCS2 antibody is un-conjugated
Application:	Western Blotting (WB), Immunohistochemistry (IHC), Immunofluorescence (IF)

Product Details

Immunogen:	Recombinant fusion protein of human HMGCS2 (NP_005509.1).
Isotype:	IgG
Characteristics:	Polyclonal Antibody
Purification:	Affinity purification

Target Details

Target:	HMGCS2
Alternative Name:	HMGCS2 (HMGCS2 Products)
Background:	The protein encoded by this gene belongs to the HMG-CoA synthase family. It is a mitochondrial enzyme that catalyzes the first reaction of ketogenesis, a metabolic pathway that provides lipid-derived energy for various organs during times of carbohydrate deprivation, such as fasting. Mutations in this gene are associated with HMG-CoA synthase deficiency.

Target Details

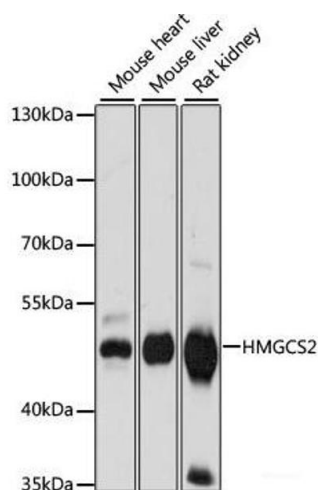
	Alternatively spliced transcript variants encoding different isoforms have been found for this gene.
Molecular Weight:	Observed_MW: 50 kDa Calculated_MW: 50 kDa/52 kDa/56 kDa
Gene ID:	3158
UniProt:	P54868
Pathways:	Response to Growth Hormone Stimulus , Cellular Response to Molecule of Bacterial Origin , Regulation of Lipid Metabolism by PPARalpha

Application Details

Application Notes:	WB 1:500-1:2000 IHC 1:50-1:100 IF 1:50-1:100
Restrictions:	For Research Use only

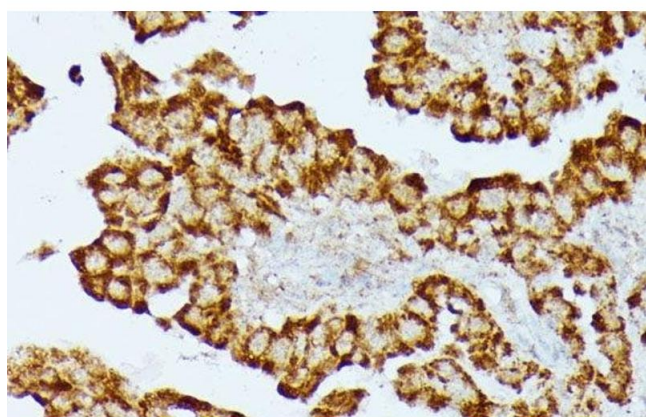
Handling

Format:	Liquid
Concentration:	1 mg/mL
Buffer:	PBS with 0.02 % sodium azide, 50 % glycerol, pH 7.3
Preservative:	Sodium azide
Precaution of Use:	This product contains Sodium azide: a POISONOUS AND HAZARDOUS SUBSTANCE which should be handled by trained staff only.
Storage:	-20 °C
Storage Comment:	Store at -20°C. Avoid freeze / thaw cycles.



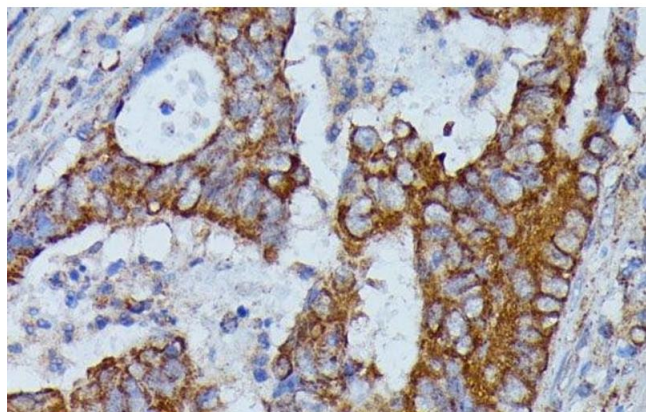
Western Blotting

Image 1. Western blot analysis of extracts of various cell lines using HMGCS2 Polyclonal Antibody at dilution of 1:1000.



Immunohistochemistry (Paraffin-embedded Sections)

Image 2. Immunohistochemistry of paraffin-embedded Human thyroid cancer using HMGCS2 Polyclonal Antibody at dilution of 1:100 (40x lens).



Immunohistochemistry (Paraffin-embedded Sections)

Image 3. Immunohistochemistry of paraffin-embedded Human colon carcinoma using HMGCS2 Polyclonal Antibody at dilution of 1:100 (40x lens).

Please check the [product details page](#) for more images. Overall 6 images are available for ABIN7257752.