

Datasheet for ABIN7257762

anti-RPL21 antibody

3 Images

[Go to Product page](#)

Overview

Quantity:	200 µL
Target:	RPL21
Reactivity:	Human, Mouse, Rat
Host:	Rabbit
Clonality:	Polyclonal
Conjugate:	This RPL21 antibody is un-conjugated
Application:	Immunohistochemistry (IHC), Immunofluorescence (IF)

Product Details

Immunogen:	Recombinant fusion protein of human RPL21 (NP_000973.2).
Isotype:	IgG
Characteristics:	Polyclonal Antibody
Purification:	Affinity purification

Target Details

Target:	RPL21
Alternative Name:	RPL21 (RPL21 Products)
Background:	Ribosomes, the organelles that catalyze protein synthesis, consist of a small 40S subunit and a large 60S subunit. Together these subunits are composed of 4 RNA species and approximately 80 structurally distinct proteins. This gene encodes a ribosomal protein that is a component of the 60S subunit. The protein belongs to the L21E family of ribosomal proteins. It is located in

Target Details

the cytoplasm. As is typical for genes encoding ribosomal proteins, there are multiple processed pseudogenes of this gene dispersed through the genome.

Gene ID: 6144

UniProt: [P46778](#)

Application Details

Application Notes: IHC 1:50-1:100 IF 1:50-1:100

Restrictions: For Research Use only

Handling

Format: Liquid

Concentration: 1 mg/mL

Buffer: PBS with 0.02 % sodium azide, 50 % glycerol, pH 7.3

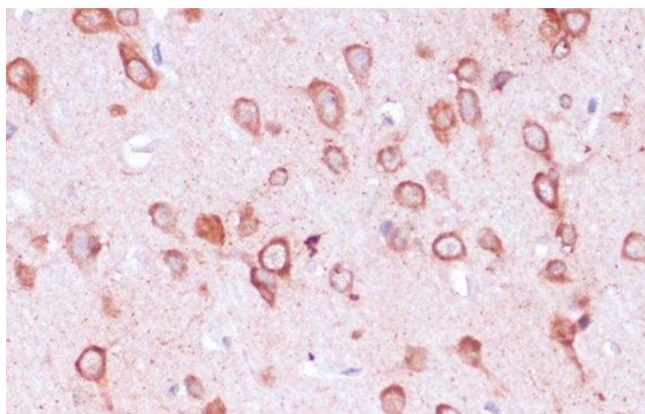
Preservative: Sodium azide

Precaution of Use: This product contains Sodium azide: a POISONOUS AND HAZARDOUS SUBSTANCE which should be handled by trained staff only.

Storage: -20 °C

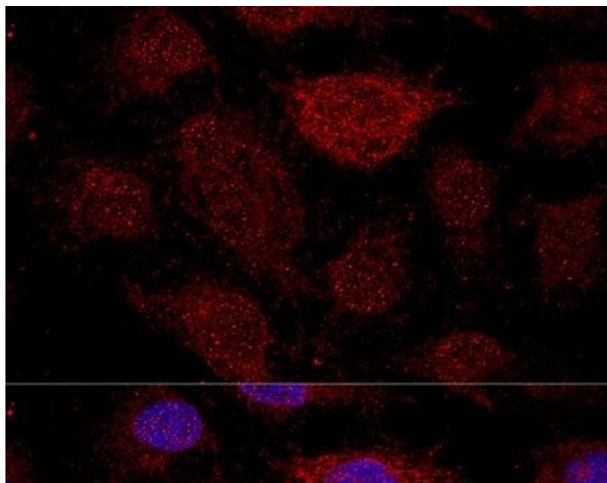
Storage Comment: Store at -20°C. Avoid freeze / thaw cycles.

Images



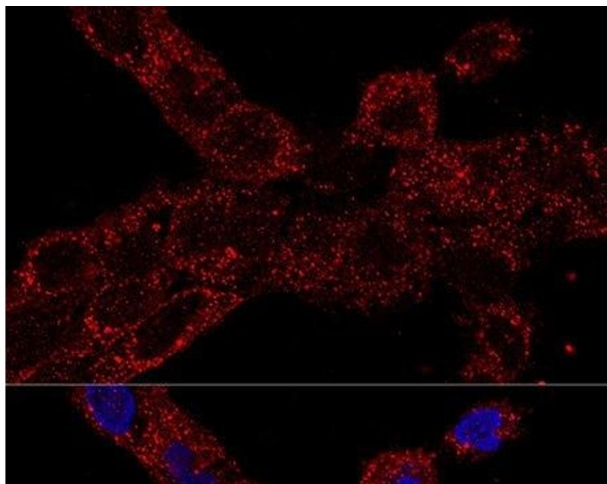
Immunohistochemistry (Paraffin-embedded Sections)

Image 1. Immunohistochemistry of paraffin-embedded Rat brain using RPL21 Polyclonal Antibody at dilution of 1:100 (40x lens).



Immunofluorescence

Image 2. Confocal immunofluorescence analysis of HeLa cells using RPL21 Polyclonal Antibody at dilution of 1:200. Blue: DAPI for nuclear staining.



Immunofluorescence

Image 3. Confocal immunofluorescence analysis of A-431 cells using RPL21 Polyclonal Antibody at dilution of 1:100. Blue: DAPI for nuclear staining.