

Datasheet for ABIN7257768  
**anti-VPS26A antibody**



[Go to Product page](#)

1 Image

## Overview

Quantity:	200 µL
Target:	VPS26A
Reactivity:	Human, Rat, Mouse
Host:	Rabbit
Clonality:	Polyclonal
Conjugate:	This VPS26A antibody is un-conjugated
Application:	Immunofluorescence (IF)

## Product Details

Immunogen:	Recombinant fusion protein of human VPS26A (NP_004887.2).
Isotype:	IgG
Characteristics:	Polyclonal Antibody
Purification:	Affinity purification

## Target Details

Target:	VPS26A
Alternative Name:	VPS26A ( <a href="#">VPS26A Products</a> )
Background:	This gene belongs to a group of vacuolar protein sorting (VPS) genes. The encoded protein is a component of a large multimeric complex, termed the retromer complex, involved in retrograde transport of proteins from endosomes to the trans-Golgi network. The close structural similarity between the yeast and human proteins that make up this complex suggests a similarity in

## Target Details

function. Expression studies in yeast and mammalian cells indicate that this protein interacts directly with VPS35, which serves as the core of the retromer complex. Alternative splicing results in multiple transcript variants encoding different isoforms.

Gene ID:	9559
UniProt:	<a href="#">O75436</a>

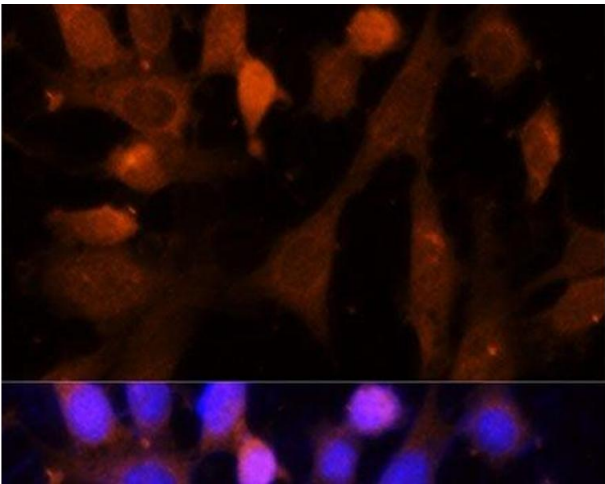
## Application Details

Application Notes:	IF 1:50-1:200
Restrictions:	For Research Use only

## Handling

Format:	Liquid
Concentration:	1 mg/mL
Buffer:	PBS with 0.02 % sodium azide, 50 % glycerol, pH 7.3
Preservative:	Sodium azide
Precaution of Use:	This product contains Sodium azide: a POISONOUS AND HAZARDOUS SUBSTANCE which should be handled by trained staff only.
Storage:	-20 °C
Storage Comment:	Store at -20°C. Avoid freeze / thaw cycles.

## Images



### Immunofluorescence

**Image 1.** Immunofluorescence analysis of NIH-3T3 cells using VPS26A Polyclonal Antibody at dilution of 1:100 (40x lens). Blue: DAPI for nuclear staining.