

Datasheet for ABIN7257772  
**anti-Contactin 6 antibody**[Go to Product page](#)

## 1 Image

## Overview

Quantity:	200 µL
Target:	Contactin 6 (CNTN6)
Reactivity:	Human
Host:	Rabbit
Clonality:	Polyclonal
Conjugate:	This Contactin 6 antibody is un-conjugated
Application:	Western Blotting (WB)

## Product Details

Immunogen:	Recombinant fusion protein of human CNTN6 (NP_055276.1).
Isotype:	IgG
Characteristics:	Polyclonal Antibody
Purification:	Affinity purification

## Target Details

Target:	Contactin 6 (CNTN6)
Alternative Name:	CNTN6 ( <a href="#">CNTN6 Products</a> )
Background:	The protein encoded by this gene is a member of the immunoglobulin superfamily. It is a glycosylphosphatidylinositol (GPI)-anchored neuronal membrane protein that functions as a cell adhesion molecule. It may play a role in the formation of axon connections in the developing nervous system. Alternative splicing results in multiple transcript variants.

## Target Details

Molecular Weight:

	Observed_MW: 114 kDa
	Calculated_MW: 113 kDa

Gene ID: 27255

UniProt: [Q9UQ52](#)

## Application Details

Application Notes: WB 1:500-1:1000

Restrictions: For Research Use only

## Handling

Format: Liquid

Concentration: 1 mg/mL

Buffer: PBS with 0.02 % sodium azide, 50 % glycerol, pH 7.3

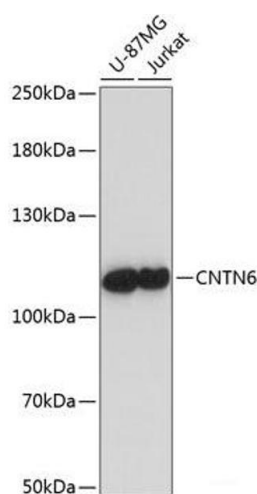
Preservative: Sodium azide

Precaution of Use: This product contains Sodium azide: a POISONOUS AND HAZARDOUS SUBSTANCE which should be handled by trained staff only.

Storage: -20 °C

Storage Comment: Store at -20°C. Avoid freeze / thaw cycles.

## Images



## Western Blotting

**Image 1.** Western blot analysis of extracts of various cell lines using CNTN6 Polyclonal Antibody at dilution of 1:1000.