

Datasheet for ABIN7257780

anti-KIRREL antibody[Go to Product page](#)**1** Image

Overview

Quantity:	200 µL
Target:	KIRREL (NEPH1)
Reactivity:	Rat, Mouse
Host:	Rabbit
Clonality:	Polyclonal
Conjugate:	This KIRREL antibody is un-conjugated
Application:	Western Blotting (WB)

Product Details

Immunogen:	Recombinant fusion protein of human KIRREL (NP_060710.3).
Isotype:	IgG
Characteristics:	Polyclonal Antibody
Purification:	Affinity purification

Target Details

Target:	KIRREL (NEPH1)
Alternative Name:	KIRREL (NEPH1 Products)
Background:	NEPH1 is a member of the nephrin-like protein family, which includes NEPH2 (MIM 607761) and NEPH3 (MIM 607762). The cytoplasmic domains of these proteins interact with the C terminus of podocin, and the genes are expressed in kidney podocytes, cells involved in ensuring size- and charge-selective ultrafiltration.

Target Details

Molecular Weight:	Observed_MW: 83 kDa
	Calculated_MW: 72 kDa/83 kDa/85 kDa
Gene ID:	55243
UniProt:	Q96J84
Pathways:	Regulation of Actin Filament Polymerization

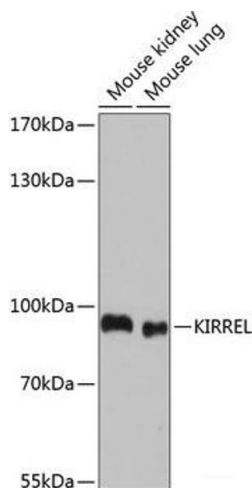
Application Details

Application Notes:	WB 1:500-1:2000
Restrictions:	For Research Use only

Handling

Format:	Liquid
Concentration:	1 mg/mL
Buffer:	PBS with 0.02 % sodium azide, 50 % glycerol, pH 7.3
Preservative:	Sodium azide
Precaution of Use:	This product contains Sodium azide: a POISONOUS AND HAZARDOUS SUBSTANCE which should be handled by trained staff only.
Storage:	-20 °C
Storage Comment:	Store at -20°C. Avoid freeze / thaw cycles.

Images



Western Blotting

Image 1. Western blot analysis of extracts of various cell lines using KIRREL Polyclonal Antibody at dilution of 1:1000.