



[Go to Product page](#)

Datasheet for ABIN7257784  
**anti-NDUFA4L2 antibody**

3 Images

### Overview

Quantity:	200 µL
Target:	NDUFA4L2
Reactivity:	Human, Mouse, Rat
Host:	Rabbit
Clonality:	Polyclonal
Conjugate:	This NDUFA4L2 antibody is un-conjugated
Application:	Immunofluorescence (IF)

### Product Details

Immunogen:	Recombinant fusion protein of human NDUFA4L2 (NP_064527.1).
Isotype:	IgG
Characteristics:	Polyclonal Antibody
Purification:	Affinity purification

### Target Details

Target:	NDUFA4L2
Alternative Name:	NDUFA4L2 ( <a href="#">NDUFA4L2 Products</a> )
Background:	NDUFA4L2 (NDUFA4, Mitochondrial Complex Associated Like 2) is a Protein Coding gene. Among its related pathways are Respiratory electron transport, ATP synthesis by chemiosmotic coupling, and heat production by uncoupling proteins. and GABAergic synapse. An important paralog of this gene is NDUFA4.

## Target Details

Gene ID: 56901

UniProt: [Q9NRX3](#)

## Application Details

Application Notes: IF 1:50-1:200

Restrictions: For Research Use only

## Handling

Format: Liquid

Concentration: 1 mg/mL

Buffer: PBS with 0.02 % sodium azide, 50 % glycerol, pH 7.3

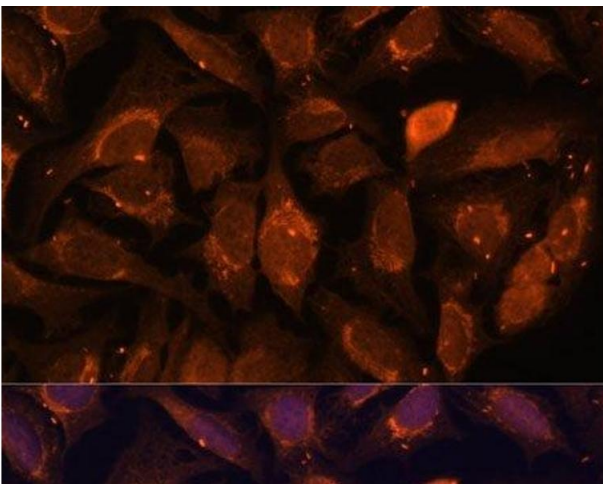
Preservative: Sodium azide

Precaution of Use: This product contains Sodium azide: a POISONOUS AND HAZARDOUS SUBSTANCE which should be handled by trained staff only.

Storage: -20 °C

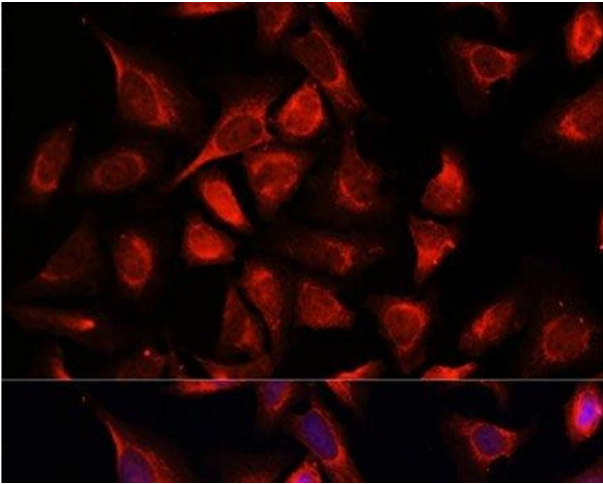
Storage Comment: Store at -20°C. Avoid freeze / thaw cycles.

## Images



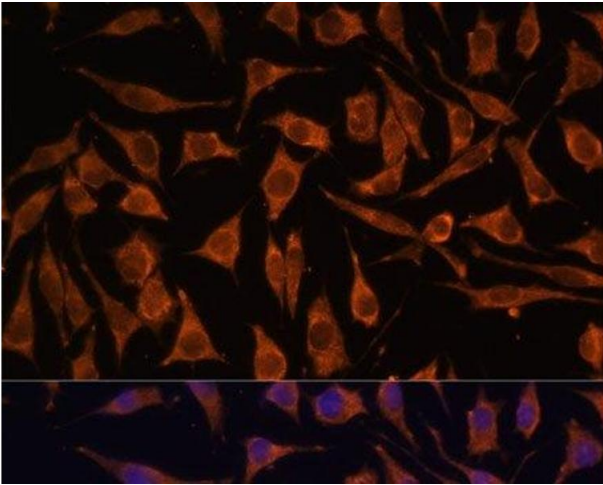
### Immunofluorescence

**Image 1.** Immunofluorescence analysis of U-2 OS cells using NDUFA4L2 Polyclonal Antibody at dilution of 1:100. Blue: DAPI for nuclear staining.



#### Immunofluorescence

**Image 2.** Immunofluorescence analysis of C6 cells using NDUFA4L2 Polyclonal Antibody at dilution of 1:100. Blue: DAPI for nuclear staining.



#### Immunofluorescence

**Image 3.** Immunofluorescence analysis of L929 cells using NDUFA4L2 Polyclonal Antibody at dilution of 1:100. Blue: DAPI for nuclear staining.