



[Go to Product page](#)

Datasheet for ABIN7257798

## anti-ADH1B antibody

### 1 Image

#### Overview

Quantity:	200 µL
Target:	ADH1B
Reactivity:	Rat
Host:	Rabbit
Clonality:	Polyclonal
Conjugate:	This ADH1B antibody is un-conjugated
Application:	Western Blotting (WB)

#### Product Details

Immunogen:	Recombinant fusion protein of human ADH1B (NP_000659.2).
Isotype:	IgG
Characteristics:	Polyclonal Antibody
Purification:	Affinity purification

#### Target Details

Target:	ADH1B
Alternative Name:	ADH1B ( <a href="#">ADH1B Products</a> )
Background:	The protein encoded by this gene is a member of the alcohol dehydrogenase family. Members of this enzyme family metabolize a wide variety of substrates, including ethanol, retinol, other aliphatic alcohols, hydroxysteroids, and lipid peroxidation products. This encoded protein, consisting of several homo- and heterodimers of alpha, beta, and gamma subunits, exhibits

## Target Details

---

high activity for ethanol oxidation and plays a major role in ethanol catabolism. Three genes encoding alpha, beta and gamma subunits are tandemly organized in a genomic segment as a gene cluster. Two transcript variants encoding different isoforms have been found for this gene.

Molecular Weight: Observed\_MW: 40 kDa  
Calculated\_MW: 35 kDa/39 kDa

Gene ID: 125

UniProt: [P00325](#)

## Application Details

---

Application Notes: WB 1:500-1:2000

Restrictions: For Research Use only

## Handling

---

Format: Liquid

Concentration: 1 mg/mL

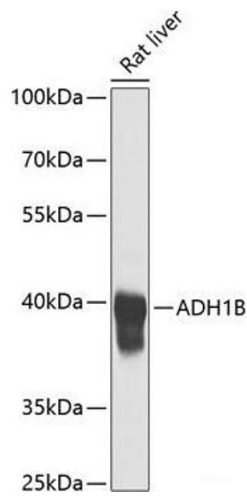
Buffer: PBS with 0.02 % sodium azide, 50 % glycerol, pH 7.3

Preservative: Sodium azide

Precaution of Use: This product contains Sodium azide: a POISONOUS AND HAZARDOUS SUBSTANCE which should be handled by trained staff only.

Storage: -20 °C

Storage Comment: Store at -20°C. Avoid freeze / thaw cycles.



### Western Blotting

**Image 1.** Western blot analysis of extracts of Rat liver using ADH1B Polyclonal Antibody at dilution of 1:1000.