

Datasheet for ABIN7257804

**anti-LHPP antibody****2** Images[Go to Product page](#)

## Overview

Quantity:	200 µL
Target:	LHPP
Reactivity:	Human, Rat, Mouse
Host:	Rabbit
Clonality:	Polyclonal
Conjugate:	This LHPP antibody is un-conjugated
Application:	Western Blotting (WB), Immunofluorescence (IF)

## Product Details

Immunogen:	Recombinant fusion protein of human LHPP (NP_071409.3).
Isotype:	IgG
Characteristics:	Polyclonal Antibody
Purification:	Affinity purification

## Target Details

Target:	LHPP
Alternative Name:	LHPP ( <a href="#">LHPP Products</a> )
Background:	LHPP (Phospholysine Phosphohistidine Inorganic Pyrophosphate Phosphatase) is a Protein Coding gene. Diseases associated with LHPP include Melancholia and Major Depressive Disorder. Among its related pathways are Respiratory electron transport, ATP synthesis by chemiosmotic coupling, and heat production by uncoupling proteins. and Metabolism. Gene

## Target Details

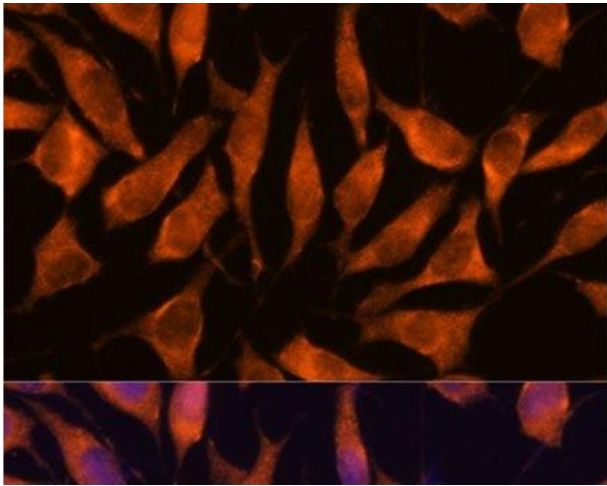
	Ontology (GO) annotations related to this gene include protein homodimerization activity and inorganic diphosphatase activity. An important paralog of this gene is HDHD2.
Molecular Weight:	Observed_MW: 29 kDa Calculated_MW: 22 kDa/29 kDa
Gene ID:	64077
UniProt:	<a href="#">Q9H008</a>

## Application Details

Application Notes:	WB 1:500-1:2000 IF 1:50-1:200
Restrictions:	For Research Use only

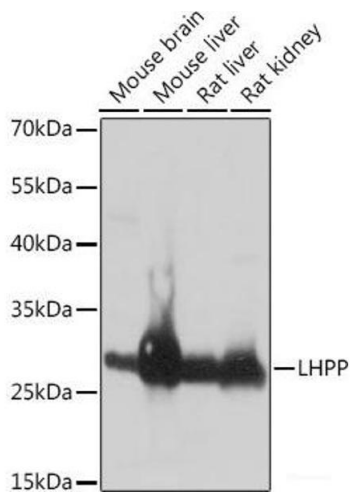
## Handling

Format:	Liquid
Concentration:	1 mg/mL
Buffer:	PBS with 0.02 % sodium azide, 50 % glycerol, pH 7.3
Preservative:	Sodium azide
Precaution of Use:	This product contains Sodium azide: a POISONOUS AND HAZARDOUS SUBSTANCE which should be handled by trained staff only.
Storage:	-20 °C
Storage Comment:	Store at -20°C. Avoid freeze / thaw cycles.



### Immunofluorescence

**Image 1.** Immunofluorescence analysis of L929 cells using LHPH Polyclonal Antibody at dilution of 1:100. Blue: DAPI for nuclear staining.



### Western Blotting

**Image 2.** Western blot analysis of extracts of various cell lines using LHPH Polyclonal Antibody at dilution of 1:1000.