

Datasheet for ABIN7257810

anti-PREPL antibody

3 Images

[Go to Product page](#)

Overview

Quantity:	200 µL
Target:	PREPL
Reactivity:	Human, Mouse, Rat
Host:	Rabbit
Clonality:	Polyclonal
Conjugate:	This PREPL antibody is un-conjugated
Application:	Western Blotting (WB), Immunofluorescence (IF)

Product Details

Immunogen:	Recombinant fusion protein of human PREPL (NP_006027.2).
Isotype:	IgG
Characteristics:	Polyclonal Antibody
Purification:	Affinity purification

Target Details

Target:	PREPL
Alternative Name:	PREPL (PREPL Products)
Background:	The protein encoded by this gene belongs to the prolyl oligopeptidase subfamily of serine peptidases. Mutations in this gene have been associated with hypotonia-cystinuria syndrome, also known as the 2p21 deletion syndrome. Several alternatively spliced transcript variants encoding either the same or different isoforms have been described for this gene.

Target Details

Molecular Weight:	Observed_MW: 72 kDa Calculated_MW: 73 kDa/76 kDa/83 kDa
-------------------	--

Gene ID:	9581
----------	------

UniProt:	Q4J6C6
----------	------------------------

Application Details

Application Notes:	WB 1:500-1:2000 IF 1:50-1:100
--------------------	-------------------------------

Restrictions:	For Research Use only
---------------	-----------------------

Handling

Format:	Liquid
---------	--------

Concentration:	1 mg/mL
----------------	---------

Buffer:	PBS with 0.02 % sodium azide, 50 % glycerol, pH 7.3
---------	---

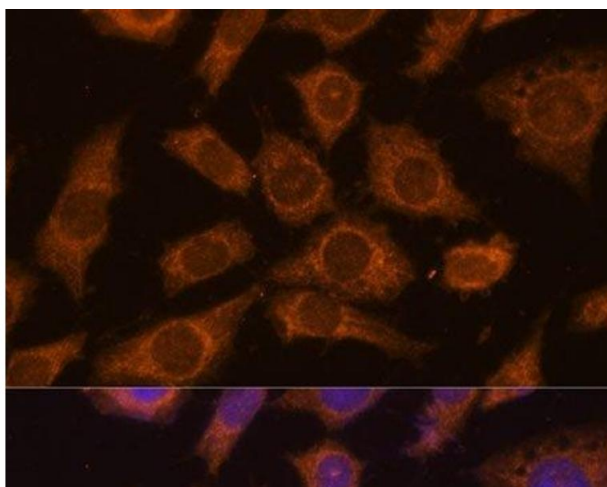
Preservative:	Sodium azide
---------------	--------------

Precaution of Use:	This product contains Sodium azide: a POISONOUS AND HAZARDOUS SUBSTANCE which should be handled by trained staff only.
--------------------	--

Storage:	-20 °C
----------	--------

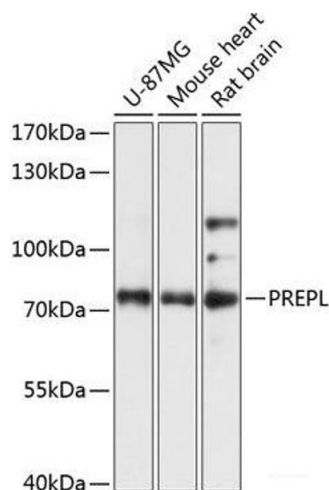
Storage Comment:	Store at -20°C. Avoid freeze / thaw cycles.
------------------	---

Images



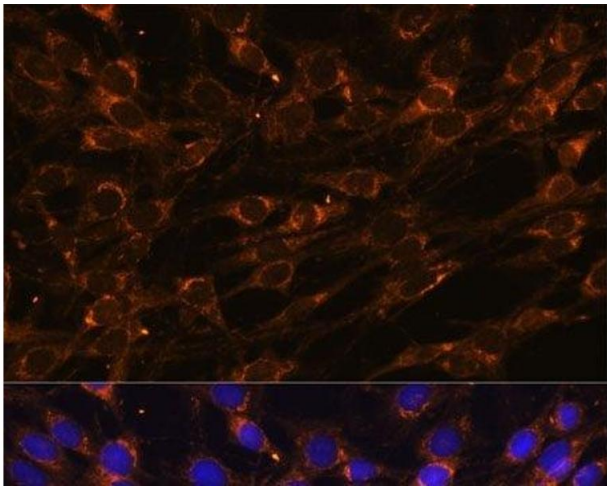
Immunofluorescence

Image 1. Immunofluorescence analysis of L929 cells using PREPL Polyclonal Antibody at dilution of 1:100 (40x lens). Blue: DAPI for nuclear staining.



Western Blotting

Image 2. Western blot analysis of extracts of various cell lines using PREPL Polyclonal Antibody at dilution of 1:3000.



Immunofluorescence

Image 3. Immunofluorescence analysis of C6 cells using PREPL Polyclonal Antibody at dilution of 1:100 (40x lens). Blue: DAPI for nuclear staining.