

Datasheet for ABIN7257814
anti-SLC25A23 antibody[Go to Product page](#)

1 Image

Overview

Quantity:	200 µL
Target:	SLC25A23
Reactivity:	Human, Mouse, Rat
Host:	Rabbit
Clonality:	Polyclonal
Conjugate:	This SLC25A23 antibody is un-conjugated
Application:	Immunofluorescence (IF)

Product Details

Immunogen:	Recombinant fusion protein of human SLC25A23 (NP_077008.2).
Isotype:	IgG
Characteristics:	Polyclonal Antibody
Purification:	Affinity purification

Target Details

Target:	SLC25A23
Alternative Name:	SLC25A23 (SLC25A23 Products)
Background:	SLC25A23 (Solute Carrier Family 25 Member 23) is a Protein Coding gene. Diseases associated with SLC25A23 include Sennetsu Fever. Gene Ontology (GO) annotations related to this gene include calcium ion binding. An important paralog of this gene is SLC25A25.

Target Details

Gene ID: 79085

UniProt: [Q9BV35](#)

Application Details

Application Notes: IF 1:50-1:200

Restrictions: For Research Use only

Handling

Format: Liquid

Concentration: 1 mg/mL

Buffer: PBS with 0.02 % sodium azide, 50 % glycerol, pH 7.3

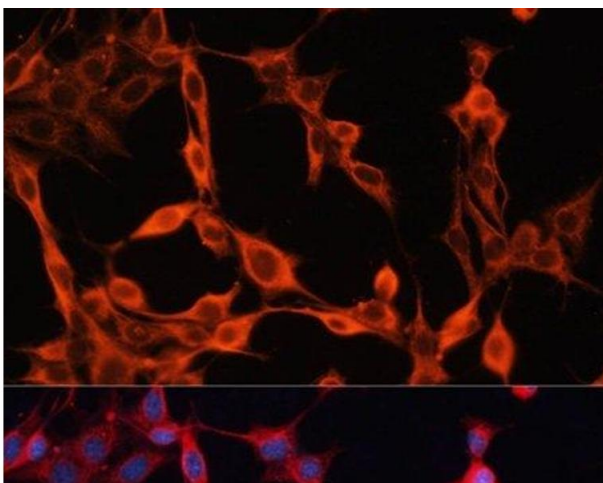
Preservative: Sodium azide

Precaution of Use: This product contains Sodium azide: a POISONOUS AND HAZARDOUS SUBSTANCE which should be handled by trained staff only.

Storage: -20 °C

Storage Comment: Store at -20°C. Avoid freeze / thaw cycles.

Images



Immunofluorescence

Image 1. Immunofluorescence analysis of NIH/3T3 cells using SLC25A23 Polyclonal Antibody at dilution of 1:100. Blue: DAPI for nuclear staining.