



Datasheet for ABIN7257830

## anti-LRP1 antibody

3 Images



[Go to Product page](#)

### Overview

Quantity:	200 µL
Target:	LRP1
Reactivity:	Human, Mouse, Rat
Host:	Rabbit
Clonality:	Polyclonal
Conjugate:	This LRP1 antibody is un-conjugated
Application:	Immunohistochemistry (IHC)

### Product Details

Immunogen:	Recombinant fusion protein of human LRP1 (NP_002323.2).
Isotype:	IgG
Characteristics:	Polyclonal Antibody
Purification:	Affinity purification

### Target Details

Target:	LRP1
Alternative Name:	LRP1 ( <a href="#">LRP1 Products</a> )
Background:	This gene encodes a member of the low-density lipoprotein receptor family of proteins. The encoded preproprotein is proteolytically processed by furin to generate 515 kDa and 85 kDa subunits that form the mature receptor (PMID: 8546712). This receptor is involved in several cellular processes, including intracellular signaling, lipid homeostasis, and clearance of

## Target Details

---

apoptotic cells. In addition, the encoded protein is necessary for the alpha 2-macroglobulin-mediated clearance of secreted amyloid precursor protein and beta-amyloid, the main component of amyloid plaques found in Alzheimer patients. Expression of this gene decreases with age and has been found to be lower than controls in brain tissue from Alzheimer's disease patients.

Gene ID: 4035

UniProt: [Q07954](#)

Pathways: [Smooth Muscle Cell Migration](#), [Platelet-derived growth Factor Receptor Signaling](#)

## Application Details

---

Application Notes: IHC 1:50-1:100

Restrictions: For Research Use only

## Handling

---

Format: Liquid

Concentration: 1 mg/mL

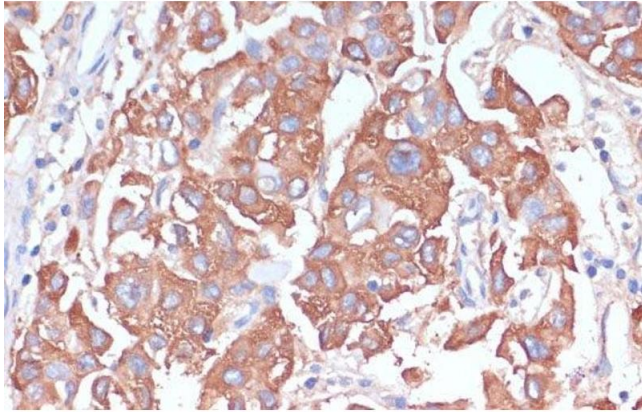
Buffer: PBS with 0.02 % sodium azide, 50 % glycerol, pH 7.3

Preservative: Sodium azide

Precaution of Use: This product contains Sodium azide: a POISONOUS AND HAZARDOUS SUBSTANCE which should be handled by trained staff only.

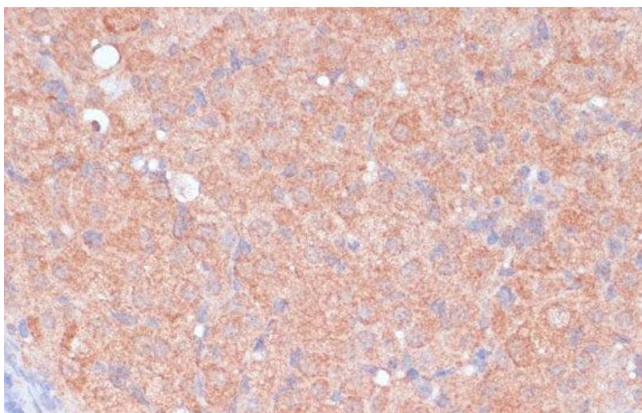
Storage: -20 °C

Storage Comment: Store at -20°C. Avoid freeze / thaw cycles.



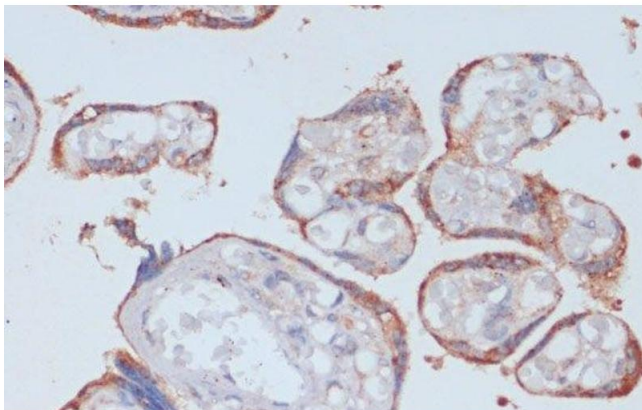
#### Immunohistochemistry (Paraffin-embedded Sections)

**Image 1.** Immunohistochemistry of paraffin-embedded Human liver cancer using LRP1 Polyclonal Antibody at dilution of 1:100 (40x lens).



#### Immunohistochemistry (Paraffin-embedded Sections)

**Image 2.** Immunohistochemistry of paraffin-embedded Rat ovary using LRP1 Polyclonal Antibody at dilution of 1:100 (40x lens).



#### Immunohistochemistry (Paraffin-embedded Sections)

**Image 3.** Immunohistochemistry of paraffin-embedded Human placenta using LRP1 Polyclonal Antibody at dilution of 1:100 (40x lens).